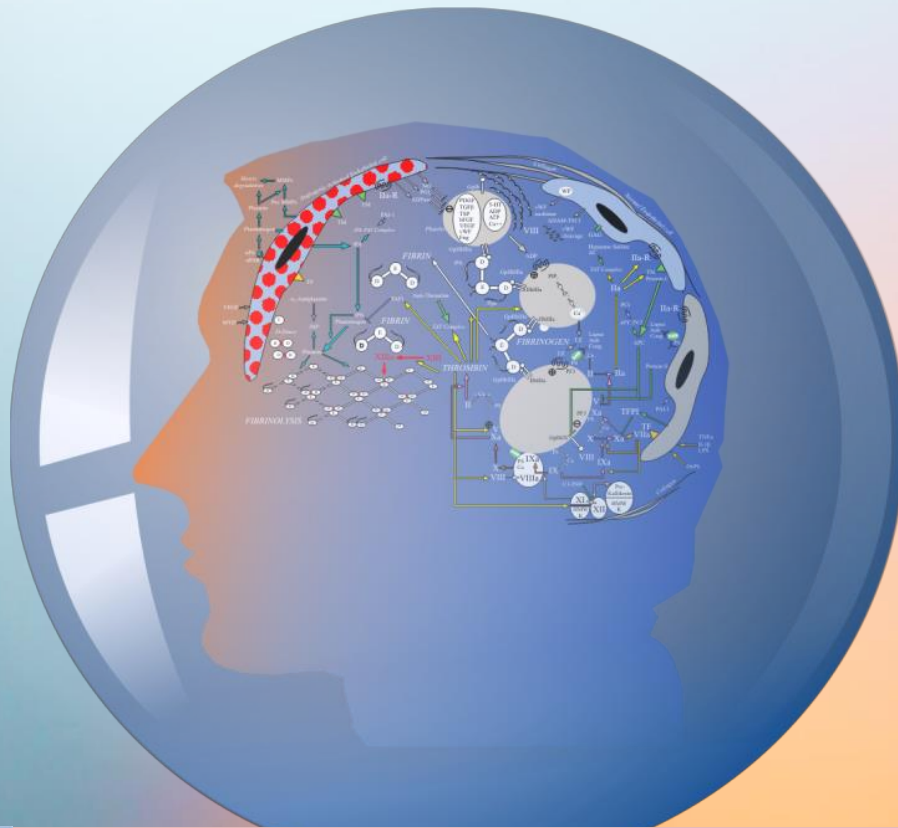


NEW !



technoclone

TECHNOSCREEN[®] ADAMTS-13 Activity

Semiquantitative flow through assay for the determination of ADAMTS-13 activity levels

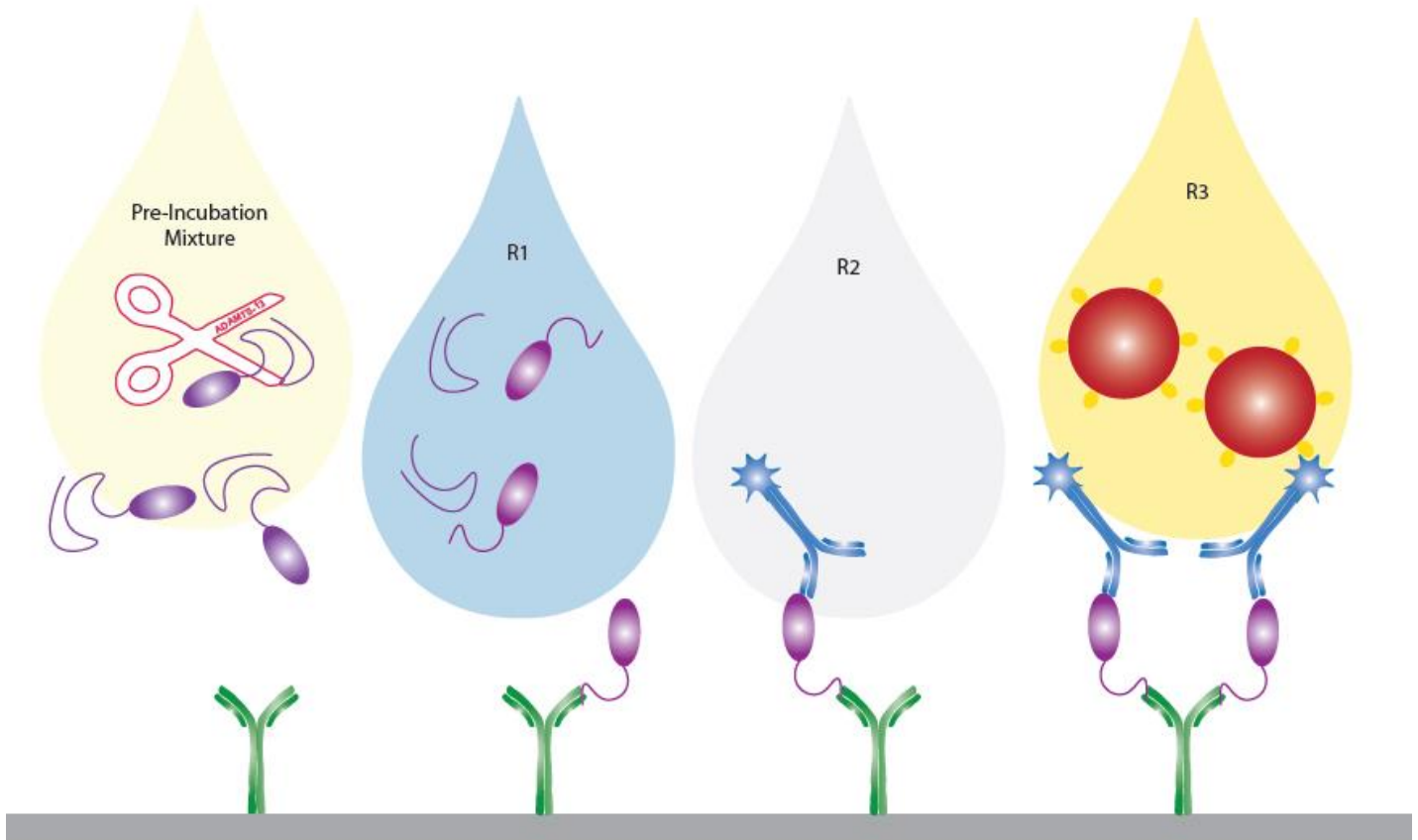


Your partner for **ADAMTS-13**

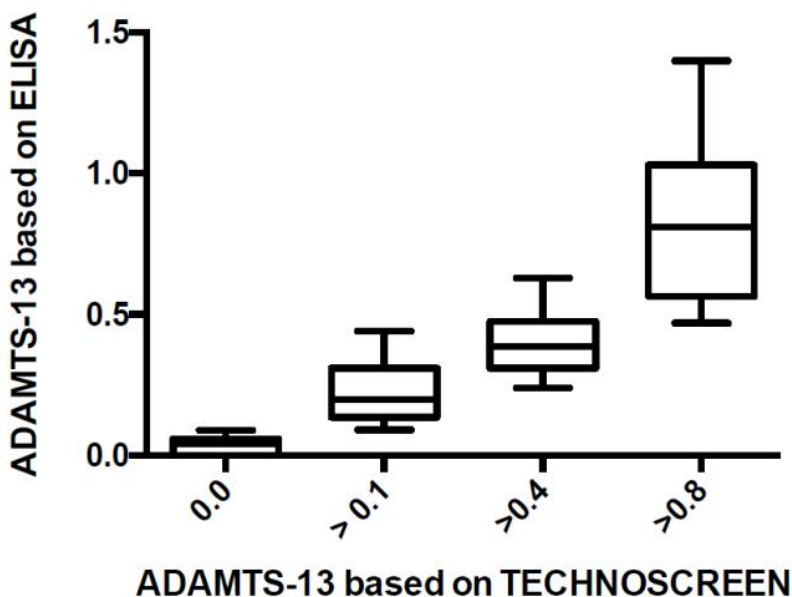
PRODUCT INFORMATION

The TECHNOSCREEN® ADAMTS-13 is a semiquantitative flow through assay for the determination of ADAMTS-13 activity levels in human citrated plasma. This assay is intended as a screening tool for estimating ADAMTS-13 activity.

Patient plasma is incubated with a vWF fragment. ADAMTS-13 specific cleavage of the vWF is then detected with a cleavage site specific antibody by the amount of color development. The amount of cleavage directly correlates to the ADAMTS-13 activity level in the plasma sample.




CORRELATION





The TECHNOSCREEN® ADAMTS-13 was compared to the TECHNOZYM® ADAMTS-13 Activity ELISA and shows very good correlation, especially in the low range < 0.1 IU/ml


EASY & FAST


TECHNOSCREEN® ADAMTS-13 Activity 

PREPARATION **TEST PROCEDURE**

PRE-INCUBATION TUBE 

R1 

R2 

R3 

1. PRE-INCUBATION MIXTURE
For the pre-incubation mixture, use the large pipette and add 300µl of plasma sample to a fresh pre-incubation tube and mix by inverting.

2. Incubate for 20 minutes.
For all steps wait until the drop is completely absorbed.

3. Add one drop R1 to both test and control well.
Do not squeeze the small pipettes too firmly.

4. Mix the pre-incubation mixture by inverting before use. Add 60µl pre-incubation mixture to the test well using the small pipette.

5. Add 60µl pre-incubation mixture to the control well using a fresh small pipette.

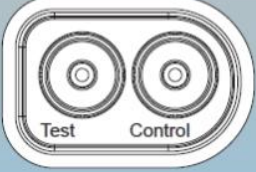
6. Add one drop R2 to both test and control well.

7. Add one drop R1 to both test and control well.

8. Add one drop R3 to both test and control well.

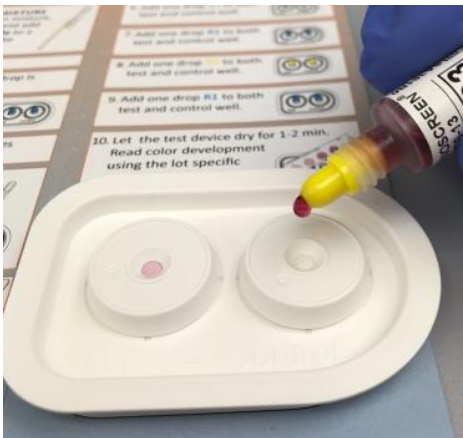
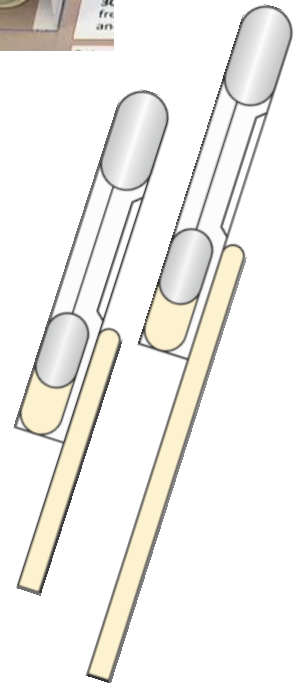
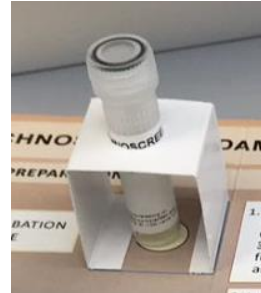
9. Add one drop R1 to both test and control well.

10. Let the test device dry for 1-2 min. Read color development using the lot specific color chart.

Test Control 

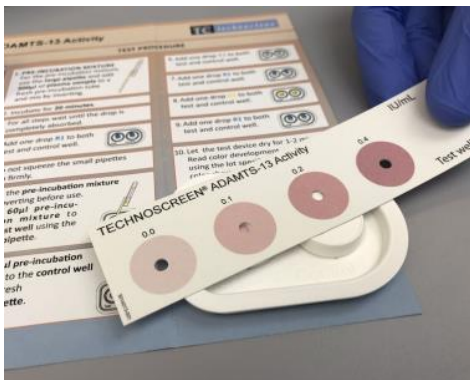
3014012-001

Short instruction with a pre-incubation tube holder included in every package



Large and small pipettes for the pre-incubation mixture included

Easy test procedure for rapid screening with ready to use reagents



For the interpretation of the results a color chart is included in the kit

No additional instrument required

Reduce time to diagnose

Product	Description	REF	Package
TECHNOSCREEN® ADAMTS-13 Activity	10 x test devices	5700100	10 tests
	10 x pre-incubation tubes		
	1 x 4 ml R1		
	1 x 1 ml R2		
	1 x 1 ml R3		
	11 x large pipettes (300 µl)		
	22 x small pipettes (60 µl)		
	1 x short instruction pad		
	1 x Reference color chart		

NEW!



Demonstration video for TECHNOSCREEN® ADAMTS-13 Activity available on the TECHNOCLONE Youtube Channel

QUANTITATIVE KITS AND KITS FOR FURTHER ADAMTS-13 DIAGNOSIS

Product	Description	REF	Package
TECHNOZYM® ADAMTS-13 Activity ELISA Chromogenic ELISA	12 x 8 anti GST strips	5450701	96 tests
	1 x 12 ml HRP Conjugate		
	1 x 30 ml Reaction Buffer		
	1 x 53 ml Wash Buffer Concentrate		
	1 x 12 ml TMB Substrate		
	2 x 6 ml GST-vWF73 Substrate		
	1 x 12 ml Stop Solution		
	8 x 0.5 ml Calibrators and Controls		
TECHNOZYM® ADAMTS-13 Antigen ELISA Chromogenic ELISA	12 x 8 anti ADAMTS-13 strips	5450601	96 tests
	1 x 0.3 ml anti-ADAMTS-13 Conjugate		
	1 x 80 ml Wash Buffer Concentrate		
	1 x 90 ml Incubation Buffer		
	1 x 12 ml TMB Substrate		
	1 x 12 ml Stop Solution		
	7 x 0.5 ml Calibrators and Controls		
	TECHNOZYM® ADAMTS-13 INH ELISA Chromogenic ELISA		
1 x 0.3 ml anti-IgG Conjugate		5450451	48 tests
1 x 80 ml Wash Buffer Concentrate			
1 x 90 ml Incubation Buffer			
1 x 12 ml TMB Substrate			
1 x 12 ml Stop Solution			
TECHNOZYM® ADAMTS-13 Activity/Antigen ELISA Fluorogenic ELISA	12/6 x 8 anti-ADAMTS-13 strips	5450501	2 x 48 tests
	1 x 0.3 ml anti-ADAMTS-13 Conjugate		
	1 x 80 ml Wash Buffer Concentrate	5450551	48 tests
	1 x 90 ml Incubation Buffer		
	2/1 x 3 ml Activity Substrate		
	1 x 6 ml Antigen Substrate		
	1 x 0.7 ml Stable Peroxidase Solution		
	1 x 6 ml Stop Solution		
	7 x 0.5 ml Calibrators and Controls		

