

y o u r   q u a l i t y   p a r t n e r   w o r l d w i d e

# precision *liquid* volumetry



Electronic micropipettes

Digital reading micropipettes

Digital setting micropipettes

Positive displacement pipettes

Repeater pipette

Microdispenser pipettes

Low profile dispensers

Bottle-top dispensers

Laboratory syringes

Pipette controllers

Pipette tips / consumables

Work stations

Service center

 **SOCOREX**  
SWISS

# Welcome to Socorex – a world of expertise in prec

## Dear Partner in science,

*This new Socorex 2015-2016 edition features a number of innovations you will enjoy discovering and using in your liquid dosing applications.*

*Made of sturdy materials, well thought out in terms of functions and metrological performance, the Calibrex™ organo and solutae bottle-top dispensers have rapidly and successfully proven themselves in the hands of demanding scientists.*

*Overcoming even tricky liquids, the new positive displacement micropipettes Acura® capillar 846 is a high performance instrument enabling trouble-free handling of viscous liquids, foaming solutions and volatile solvents.*

*Significant progress has been made with our long established international partner network, adding new forces where needed. Their details are listed in the Distributor section of our web site. Highly qualified, well documented and equipped to provide the best advice and technical support, they work hand in hand with the thousands of end-users trusting Socorex throughout the world.*

*I seize the opportunity to pay a special tribute to both communities for their loyalty and contribution to our successful growth over so many years.*

Sincerely



Sylvain Christen, CEO

## Brief history

Socorex Isba SA, often referred to as just Socorex per its original name, was first founded in the late 1940s. Two young watchmakers had identified the need for new types of quality syringes for medical applications. The products rapidly met international success.

In search of synergies, the company subsequently merged with another firm, moved to the city of Lausanne on Lake Geneva, changed name to become Socorex Isba SA and finally, under a new family ownership, built up-to-date premises in Ecublens – we are in 1963.

Fifty years later, still with the same shareholders, Socorex has grown its two distinct laboratory and animal health divisions, reflecting a long time strategic reconversion. An important 50<sup>th</sup> anniversary year, 2013 marked the inauguration of a major facility improvement programme. This included the construction of a new administration building and production plant expansion. Enlarged, the modern site will support the company's capacity to handle many more success stories in the future.

## Products & services

Today's manufacturing programme includes a wide variety of high precision instruments used for reliably measuring, dosing, transferring, dispensing and injecting liquids in a large number of applications.

Manual and electronic micropipettes, single and multichannel pipettors, repeater pipettes, dispensers, pipette controllers and re-usable syringes, together with their accessories, constitute the heart of the programme.

Each precision instrument bears its own serial number and passes a strict performance control attested by an individual QC certificate.

The Socorex Service Center offers a global repair and calibration programme. The choices range from basic maintenance to accredited calibrations of all micropipettes and dispensers according to ISO 17025 – whatever their brand.



Sylvain Christen, CEO

Jean-Pierre Uldry,  
Director of Engineering

Pascal Durand, Admin.  
and Finance Manager

Thérèse Valenziano,  
Customer Service

Laurence Louy-Drevici,  
Business Development

Tatjana Van Bogaert,  
CEO Assistant

Aurelie Stangoni,  
Customer Service

Beatriz Grasset, Sales  
Administration Manager



# ision liquid handling

## Our customers

We are proud to include virtually all private, industrial, academic and government laboratories as our customers.

Those are involved in routine research and educational activities in fields as diverse as life sciences – such as biotechnology and molecular biology – medicine, chemistry, pharmacology, environment, agriculture, etc.

Scientists are served efficiently by the dedicated network of Socorex distributors. Selected amongst the best suppliers, they carry an inventory of our products and provide technical support, repair and calibration services.

Find your closest Socorex partners listed on [www.socorex.com](http://www.socorex.com)



## Quality achievements

Socorex's dedication to precision and quality has been an all-time tradition. Our commitment to manufacturing the most reliable instruments and offering the best services was formalised with the completion of the ISO 9001 and ISO 13485 Quality Management System certifications.

Product lines used in the In Vitro Diagnostics fields conform to the IVD 98/79 EEC directive for medical devices and are CE certified accordingly.

Instruments are designed to operate under national and international standards such as ISO 8655, GLP, GMP and NCCLS.

Warranty coverage is three years on all manual pipettors, two years on electronic pipettes, dispensers and repeaters.

## Product range

### Electronic micropipettes

**Acura® *electro***

3

### Digital reading micropipettes

**Acura® *manual***  
**and Acura® *manual XS***

7

### Digital setting micropipettes

**Calibra® *digital***

14

### Positive displacement pipettes

**Acura® *positive***

16

### Repeater pipette

**Stepper™ / EcoStep™**

17

### Microdispenser pipettes

**Acura® *manual***

18

### Low-profile dispensers

**Acurex™ *compact***

19

### Bottle-top dispensers

**Calibrex™ *digital***

20

### Laboratory syringes

**Dosys™**

26

### Pipette controllers

**Profiller™ / Profillette™**

30

### Pipette tips / consumables

**Qualitips®**

31

### Work stations

37

### Service center

39



Christele Donze,  
Customer Service

Susanne Henry, Communication  
Project Manager

Stephanie Boegli,  
Service Center

Jean-Marc Ammann, Quality  
and Regulatory Affairs Manager

Yves Lachavanne, Marketing  
and Sales Support Manager

Pascal Forestier, Technical  
Support Manager

Yves Liechti,  
Logistics Manager

# Acura<sup>®</sup> *electro* electronic micropipettes



Latest up-grade of a successful line making electronic pipetting simpler and safer than ever. The microprocessor-controlled instrument includes intuitive software avoiding any complicated programming steps. No particular skills are required to get quick access to six working modes and many volumes to select from. Two-year warranty.

## The Acura<sup>®</sup> *electro* models 926XS micro, 936 macro, 956 multi

### Product advantages

- Optimal ergonomics, light weight
- Easy, intuitive, self-teaching programme
- Large display, reversible for right or left reading
- Swift-interchange battery pack
- Fast charge, long working autonomy
- Adjustable tip ejector\* fitting most tips
- Pipetting cycle counter
- 27 interchangeable volumetric modules all fitting same control unit

\* Socorex patented



### Natural ergonomics ①

The Acura<sup>®</sup> *electro* offers shape, balance and working ergonomics resembling those of a manual instrument. But comfort is so greatly improved that pipetting and result consistency are just outstanding.

### Unique "right or left" display reading ②

Display converts instantly to right or left side reading. All information clearly presented and visible at a glance during programming, pipetting and calibration steps.

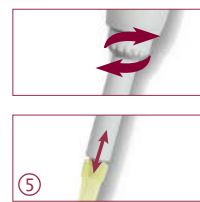


### Variable working speed ③

Located on the front side, speed selector allows swift change even during the pipetting process. In addition, slow speed access at any time by gentle touch of start button.

### Pipetting cycle counter ④

A simple double click gives access to the number of pipetting cycles performed since last zeroing.



### Tip ejection - easier than ever ⑤

Maximal efficiency obtained with a large surface, ergonomically located ejector button. The shaft height adjustment system called Justip<sup>™</sup> (4 mm span) - controlled by efficient click-stops - allows a wide selection of tips to tightly fit the nozzle.

The multichannel bowed shape ejector head permits effortless, sequential tip ejection.





## Great built-in working flexibility

Surf through mode selection by pressing a single button.

### Forward mode

Aspiration and pipetting of set volume. Suitable for all applications.

### Reverse mode

Aspiration in excess, followed by dosing of set volume. Enhances reproducibility below 20 µL. Especially recommended for viscous and foaming liquids.

### Stepper mode

Tip filling and step-by-step distribution. Best suited to aliquot samples.

### Dilution mode

Aspiration of 2 or 3 different volumes for restitution in one shot. An easy way to dilute samples.

### Tactile mode

"Start and stop" liquid measurement, titration and gel loading by simple touch of activation button.

### Mixing

"Up and down" liquid flow in the tip / vial.



## Interchangeable volumetric modules ③

One control unit fits a choice of 27 volumetric assemblies available separately. This greatly extends working possibilities and makes electronic pipetting affordable to all budgets. Disassembling and re-assembling without any tool contributes towards maximal flexibility. Calibration specificities of extra modules - as set by factory QC or by pipette owner - are retained in instrument memory.



## Pipette charging stand ①

Stand allows charging and storing up to three electronic pipettes or battery packs simultaneously. Each position is fitted with a red/green charging LED. One stand supplied with every initial package.

## Battery charging rack ②

Space saving stand holds up to three battery packs simultaneously. The ideal charging and storage accessory for spare batteries, available at any time.



## Calibration ④

Control software gives immediate access to calibration menu. Performance check possible over two or three independent volumes (Vmin, Vmid and Vmax). New settings entered directly from the keyboard. Error message warns of any inaccurate plunger movement.



## Long working autonomy ⑤

NiMH battery pack exchangeable instantly. Fast battery charging (< 1.5 hours) and extended working autonomy (> 3000 consecutive pipetting cycles). Battery charge level clearly visible on display. Automatic energy saving stand-by when unused.



**926XS**  
micro

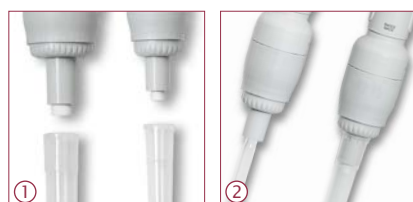
0.1 - 2  $\mu$ L  
 0.5 - 10  $\mu$ L  
 1 - 20  $\mu$ L  
 2.5 - 50  $\mu$ L  
 5 - 100  $\mu$ L  
 10 - 200  $\mu$ L  
 50 - 1000  $\mu$ L

**936**  
macro

0.1 - 2 mL  
 0.25 - 5 mL  
 0.5 - 10 mL

**956**  
multi

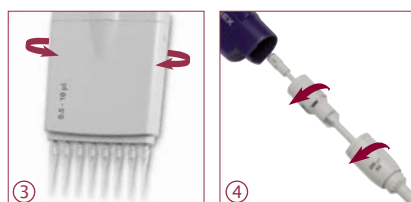
0.5 - 10  $\mu$ L  
 2.5 - 50  $\mu$ L  
 10 - 200  $\mu$ L  
 20 - 350  $\mu$ L

**Nozzle protection filter ①**

Macro models accommodate a filter protecting instrument against liquid overflow and contamination. Located in the nozzle, it can be removed and changed easily.

**Pasteur pipette - straw tip adapters ②**

Optional accessories fit 2 mL glass Pasteur pipettes or 5 mL straw tip instead of Polypropylene tips.

**Optimal working position ③**

360° rotation of multichannel volumetric modules allows selection of the best working position.

**Time efficient maintenance ④**

Pipette construction limits maintenance to a minimum - no tool required to remove volumetric module. The pipetting cycle counter facilitates maintenance monitoring.

Whenever sterilisation is needed, volumetric modules can be autoclaved at 121°C / 250°F.

**The Acura® *electro* product advantages****Micropipettes**

- Reduced shaft length and conical end improve driveability
- Easy access to microtubes and microplates
- Optional longer volumetric modules
- Simple conversion by user at any time
- Unsurpassed metrological performance and stability

**Macropipettes**

- Interchangeable nozzle protection filter
- Adapters for Pasteur pipette and straw tips
- Outstanding accuracy and precision

**Multichannel**

- Large selection of 8- and 12-channel models
- Light weight and perfect hand fitting
- Sequential tip ejection
- Also fit any single channel volumetric module

**Initial package ⑤**

Recommended when purchasing an Acura® *electro* for the first time, each initial package contains one electronic pipette, QC certificate and operating instructions, charging stand, power supply, additional battery pack, Qualitips® pipette tips samples. Thereafter, additional pipettes can be purchased alone and charged on existing stand.

## Performance and ordering information – Instruments

Initial package includes pipette, charging stand and accessories. Additional pipettes (alone) supplied with individual QC certificate, Qualitips<sup>®</sup> pipette tips samples and operating instructions.

Volume	Division	Inaccuracy (E%)			Imprecision (CV%)			Tip style	Cat. No. Initial package*	Cat. No. Pipette alone
		Min. vol.	Mid. vol.	Max. vol	Min. vol.	Mid. vol.	Max. vol			
Micropipettes Acura® electro 926XS										
0.1 - 2 µL	0.01 µL	<+/- 2.5 % <sup>1)</sup>	<+/- 1.2 %	<+/- 0.9 %	< 2.5 % <sup>1)</sup>	< 1.5 %	< 0.8 %	Ultra 10 µL	926.0002E	926.0002
0.5 - 10 µL	0.05 µL	<+/- 1.2 % <sup>2)</sup>	<+/- 0.8 %	<+/- 0.6 %	< 1.5 % <sup>2)</sup>	< 0.7 %	< 0.35 %	Ultra 10 µL	926.0010E	926.0010
0.5 - 10 µL	0.05 µL	<+/- 1.2 % <sup>2)</sup>	<+/- 0.8 %	<+/- 0.6 %	< 1.7 % <sup>2)</sup>	< 0.8 %	< 0.4 %	200 µL	926.0010YE	926.0010Y
1 - 20 µL	0.1 µL	<+/- 1.2 % <sup>2)</sup>	<+/- 0.6 %	<+/- 0.5 %	< 1.2 % <sup>2)</sup>	< 0.4 %	< 0.3 %	200 µL	926.0020E	926.0020
2.5 - 50 µL	0.25 µL	<+/- 1.0 % <sup>2)</sup>	<+/- 0.6 %	<+/- 0.5 %	< 0.7 % <sup>2)</sup>	< 0.3 %	< 0.25 %	200 µL	926.0050E	926.0050
5 - 100 µL	0.5 µL	<+/- 1.0 % <sup>2)</sup>	<+/- 0.6 %	<+/- 0.5 %	< 0.7 % <sup>2)</sup>	< 0.3 %	< 0.2 %	200 µL	926.0100E	926.0100
10 - 200 µL	1.0 µL	<+/- 1.0 % <sup>2)</sup>	<+/- 0.6 %	<+/- 0.4 %	< 0.6 % <sup>2)</sup>	< 0.2 %	< 0.15 %	200 µL	926.0200E	926.0200
50 - 1000 µL	5.0 µL	<+/- 0.8 % <sup>2)</sup>	<+/- 0.5 %	<+/- 0.4 %	< 0.4 % <sup>2)</sup>	< 0.15 %	< 0.1 %	1000 µL	926.1000E	926.1000
Macropipettes Acura® electro 936										
0.1 - 2 mL	0.01 mL	<+/- 1.5 % <sup>2)</sup>	<+/- 1.0 %	<+/- 0.5 %	< 0.6 % <sup>2)</sup>	< 0.3 %	< 0.15 %	2 mL	936.02E	936.02
0.25 - 5 mL	0.05 mL	<+/- 1.2 % <sup>2)</sup>	<+/- 0.8 %	<+/- 0.5 %	< 0.6 % <sup>2)</sup>	< 0.3 %	< 0.15 %	5 mL	936.05E	936.05
0.5 - 10 mL	0.05 mL	<+/- 1.0 % <sup>2)</sup>	<+/- 0.7 %	<+/- 0.5 %	< 0.5 % <sup>2)</sup>	< 0.2 %	< 0.15 %	10 mL	936.10E	936.10
8-channel pipettes Acura® electro 956										
0.5 - 10 µL	0.05 µL	<+/- 3.5 % <sup>2)</sup>	<+/- 1.5 %	<+/- 1.0 %	< 3.0 % <sup>2)</sup>	< 0.9 %	< 0.7 %	Ultra 10 µL	956.08.010E	956.08.010
2.5 - 50 µL	0.25µL	<+/- 1.0 % <sup>2)</sup>	<+/- 0.9 %	<+/- 0.8 %	< 1.0 % <sup>2)</sup>	< 0.6 %	< 0.4 %	200 µL	956.08.050E	956.08.050
10 - 200 µL	1.0 µL	<+/- 0.9 % <sup>2)</sup>	<+/- 0.7 %	<+/- 0.6 %	< 0.6 % <sup>2)</sup>	< 0.4 %	< 0.25 %	200 µL	956.08.200E	956.08.200
20 - 350 µL	5.0 µL	<+/- 1.0 % <sup>2)</sup>	<+/- 0.8 %	<+/- 0.6 %	< 0.6 % <sup>2)</sup>	< 0.4 %	< 0.25 %	350 µL	956.08.350E	956.08.350
12-channel pipettes Acura® electro 956										
0.5 - 10 µL	0.05 µL	<+/- 3.5 % <sup>2)</sup>	<+/- 1.5 %	<+/- 1.0 %	< 3.0 % <sup>2)</sup>	< 0.9 %	< 0.7 %	Ultra 10 µL	956.12.010E	956.12.010
2.5 - 50 µL	0.25 µL	<+/- 1.0 % <sup>2)</sup>	<+/- 0.9 %	<+/- 0.8 %	< 1.0 % <sup>2)</sup>	< 0.6 %	< 0.4 %	200 µL	956.12.050E	956.12.050
10 - 200 µL	1.0 µL	<+/- 0.9 % <sup>2)</sup>	<+/- 0.7 %	<+/- 0.6 %	< 0.6 % <sup>2)</sup>	< 0.4 %	< 0.25 %	200 µL	956.12.200E	956.12.200
20 - 350 µL	5.0 µL	<+/- 1.0 % <sup>2)</sup>	<+/- 0.8 %	<+/- 0.6 %	< 0.6 % <sup>2)</sup>	< 0.4 %	< 0.25 %	350 µL	956.12.350E	956.12.350

Performance values obtained in Forward mode with bi-dist. water at constant temperature (± 0.5°C) comprised between 20 and 25°C in accordance with ISO 8655. Performance measured at: <sup>1)</sup> 0.5 µL, <sup>2)</sup> 10% of nominal volume

\* Replace E by country code if other plug type than Europe style needed: G = UK, U = USA-Japan, A = Australia-NZ

## Ordering information - Volumetric modules and accessories



Volume range	Tip style	Cat. No.
<b>Single channel microvolumettes ①</b>		
<b>Reduced shaft length</b>		
0.1 - 2 µL	Ultra 10 µL	800.0002XS
0.5 - 10 µL	Ultra 10 µL	800.0010XS
0.5 - 10 µL	200 µL	800.0010YXS
1 - 20 µL	200 µL	800.0020XS
2.5 - 50 µL	200 µL	800.0050XS
5 - 100 µL	200 µL	800.0100XS
10 - 200 µL	200 µL	800.0200XS
50 - 1000 µL	1000 µL	800.1000XS
<b>Regular shaft length</b>		
0.1 - 2 µL	Ultra 10 µL	800.0002
0.5 - 10 µL	Ultra 10 µL	800.0010
0.5 - 10 µL	200 µL	800.0010Y
1 - 20 µL	200 µL	800.0020
2.5 - 50 µL	200 µL	800.0050
5 - 100 µL	200 µL	800.0100
10 - 200 µL	200 µL	800.0200
50 - 1000 µL	1000 µL	800.1000

Volume range	Tip style	Cat. No.
<b>Single channel macrovolumettes ②</b>		
0.1 - 2 mL	2 mL	800.2000
0.25 - 5 mL	5 mL	800.5000
0.5 - 10 mL	10 mL	800.10000
<b>8-channel microvolumettes ③</b>		
0.5 - 10 µL	Ultra 10 µL	800.08.010
2.5 - 50 µL	200 µL	800.08.050
10 - 200 µL	200 µL	800.08.200
20 - 350 µL	350 µL	800.08.350
<b>12-channel microvolumettes ③</b>		
0.5 - 10 µL	Ultra 10 µL	800.12.010
2.5 - 50 µL	200 µL	800.12.050
10 - 200 µL	200 µL	800.12.200
20 - 350 µL	350 µL	800.12.350

Description	Pack	Cat. No.
<b>Charging units, 3 positions</b>		
Stand for pipettes or battery packs ④	1 / pk	320.903.48
Stand for power handles only ⑤	1 / pk	320.913.48
<b>Spare battery, blue colour</b>		
NiMH, 4.8V	1 / pk	900.920.48
NiMH, 4.8V	2 / pk	900.922.48
<b>Power supply, 100-240V</b>		
Europe style plug	1 / pk	900.901.48E
UK style plug	1 / pk	900.901.48G
USA-Japan style plug	1 / pk	900.901.48U
Australia - NZ style plug	1 / pk	900.901.48A
<b>Nozzle protection filters</b>		
For 2 and 5 mL models	250/pk	322.05
For 10 mL model	100/pk	322.10
<b>Adapter-nozzle - Pasteur pipette</b>		
For 2 mL model	1 / pk	1.835.631
For 5 mL model	1 / pk	1.835.633
<b>Adapter - 5 mL straw tip</b>		
For 2 and 5 mL models	1 / pk	1.831.707

See Qualitips<sup>®</sup> page 32 - 34



# Acura® manual and Acura® manual XS digital reading micropipettes



The Acura® *manual* are precision pipettes combining high-tech materials with exceptional, user friendly ergonomics. There is a choice between 825 model, the classic one for all applications and 826 XS micropipette specially dedicated to research. Both lines bring much more than superior performance and make pipetting safe and agreeable. Three-year warranty.

## The Acura® manual 825 / 826 XS

### Product advantages

- Smart and reliable volume adjustment
- Single-handed volume setting
- Precision digital display visible at all time
- Justip™ adjustable tip ejector\* fitting most tips
- Swift-set user calibration system\*
- Shock, UV-light and autoclaving resistance

\* Socorex patented

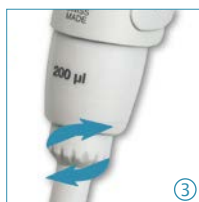
### Most comfortable pipetting ①

The Acura® *manual* fits everybody's hand with or without glove. Ergonomic shape, light weight and soft plunger travel care for better comfort.



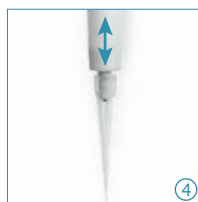
### Ejector button ②

Ergonomically positioned, the large surface, soft padded ejector provides for low-pressure activation.



### Adjustable tip ejection ③ ④

Ejector shaft height adjustment system called Justip™ allows a wide selection of tips to tightly fit the nozzle.



### Minimum maintenance / sterilisation ⑤

Easy disassembling for thorough cleaning. Sterilisation achieved by autoclaving instrument fully assembled (121°C / 250°F).



**825**  
micro

0.1 – 2 µL  
0.5 – 10 µL  
1 – 10 µL  
2 – 20 µL  
5 – 50 µL  
10 – 100 µL  
20 – 200 µL  
100 – 1000 µL



## Performance and tip style - Acura® manual 825 and 826 XS micropipettes

Volume	Division	Inaccuracy (E%)			Imprecision (CV%)			Tip style
		Min. vol.	Mid. vol.	Max. vol.	Min. vol.	Mid. vol.	Max. vol.	
0.1 – 2 µL	0.002 µL	< ± 6.0% <sup>1)</sup>	< ± 4.0%	< 2.0%	< 5.0% <sup>1)</sup>	< 3.3%	< 1.5%	Ultra 10 µL
0.5 – 10 µL	0.01 µL	< ± 2.5% <sup>2)</sup>	< ± 1.8%	< 1.0%	< 1.8% <sup>2)</sup>	< 1.2%	< 0.5%	Ultra 10 µL
1 – 10 µL	0.01 µL	< ± 2.5%	< ± 1.8%	< 1.0%	< 2.5%	< 1.6%	< 0.7%	200 µL
2 – 20 µL	0.02 µL	< ± 2.5%	< ± 1.8%	< 1.0%	< 1.7%	< 1.1%	< 0.5%	200 µL
5 – 50 µL	0.1 µL	< ± 1.5%	< ± 1.3%	< 1.0%	< 1.0%	< 0.7%	< 0.4%	200 µL
10 – 100 µL	0.1 µL	< ± 1.5%	< ± 1.2%	< 0.8%	< 1.0%	< 0.6%	< 0.2%	200 µL
20 – 200 µL	0.2 µL	< ± 1.5%	< ± 1.1%	< 0.6%	< 0.6%	< 0.4%	< 0.2%	200 µL
100 – 1000 µL	1 µL	< ± 1.5%	< ± 1.0%	< 0.5%	< 0.5%	< 0.4%	< 0.2%	1000 µL

Performance values obtained with bidest. water at constant temperature (± 0.5°C) comprised between 20 and 25°C in accordance with ISO 8655.

<sup>1)</sup> measured at 0.5 µL <sup>2)</sup> measured at 1 µL

**extra  
sharp**



## 826 XS extra sharp

0.1 - 2 µL  
0.5 - 10 µL  
1 - 10 µL  
2 - 20 µL  
5 - 50 µL  
10 - 100 µL  
20 - 200 µL  
100 - 1000 µL



### Instant calibration ① ②

Swift-set user calibration system - with integrated key and locking mechanism - makes tedious procedures a thing of the past. Easy and precise, it is in full compliance with international standards and recommendations.

### Safety seal ③

Though easily removed when needed, the switch protection seal is autoclaving resistant.

#### Calibration seal stickers

Replacement seals	25 / pk	1.825.025
Replacement seals	100 / pk	1.825.100

### Weights and ordering information - Acura® manual 825 and 826 XS

Volume	weight		Cat. N°	
	825	826 XS	825	826 XS
0.1 - 2 µL	88 gr	84 gr	825.0002	826.0002
0.5 - 10 µL	88 gr	84 gr	825.0010	826.0010
1 - 10 µL	88 gr	85 gr	825.0010Y	826.0010Y
2 - 20 µL	88 gr	85 gr	825.0020	826.0020
5 - 50 µL	90 gr	86 gr	825.0050	826.0050
10 - 100 µL	92 gr	87 gr	825.0100	826.0100
20 - 200 µL	90 gr	86 gr	825.0200	826.0200
100 - 1000 µL	95 gr	88 gr	825.1000	826.1000

Derived from the Acura® manual 825, the 826 XS line was designed with the research scientists in mind. Shorter, smoother, lighter in weight, the eight models offer key features aiming at excellence in pipetting.

### The Acura® manual 826 XS

#### Added advantages, distinct from 825 line

- Excellent ergonomic shape and size ratio
- New springs and tightness seal for extra-smooth activation
- Reduced weight - lighter than leading brands (see weight chart below)
- Increased driveability with short, narrow shaft
- Conical shaft end for easy reach in smaller microtubes



Short shaft enhances precision of hand movement and guarantees superior driveability. A great help in fine applications such as pipetting in microtubes or microplates.



Pipetting		Overshoot	
Start	End	Start	End
≤1.6 N	≤2.8 N	≤9.3 N	≤11.5 N

### Extra smooth activation

Unique tightness lip seal and new springs provide for ultra-soft pipetting, reducing hand fatigue while working. Above forces, measured on a 20 - 200 µL model, are indicative of very limited finger efforts. Yet, the overshoot stop offers a clear tactile indicator.

\* 1 Newton (N) ~ 0.1 kilogramme force (kgf)

See Qualitips® page 32 - 34

Pipette packs offer an extended choice of volume combinations, covering all individual requirements in any research or routine application. Available at attractive saver prices, they match with today's budget constraints.



### The Acura® manual 825 / 835 Triopack

- Three adjustable micropipettes
- Large choice of volume combinations up to 10 mL
- Nine different packs

#### Ordering information - Triopack

Including: sampling of Qualitips®, silicone grease, Q.C. certificates and operating instructions

Pack	Contents (Micro / macropipette models)			Cat. No.	Pack	Contents (Micro / macropipette models)			Cat. No.	Pack	Contents (Micro / macropipette models)			Cat. No.
C	2 µL (0.1 - 2)	10 µL (0.5 - 10)	50 µL (5 - 50)	825.TRIO.C	O	10 µL (0.5 - 10)	100 µL (10 - 100)	1000 µL (100 - 1000)	825.TRIO.O	T	50 µL (5 - 50)	200 µL (20 - 200)	1000 µL (100 - 1000)	825.TRIO.T
J	2 µL (0.1 - 2)	20 µL (2 - 20)	200 µL (20 - 200)	825.TRIO.J	P	10Y µL (1 - 10)	100 µL (10 - 100)	1000 µL (100 - 1000)	825.TRIO.P	V	100 µL (10 - 100)	1000 µL (100 - 1000)	5 mL (0.5 - 5)	825.TRIO.V
M	10Y µL (1 - 10)	50 µL (5 - 50)	200 µL (20 - 200)	825.TRIO.M	S	20 µL (2 - 20)	200 µL (20 - 200)	1000 µL (100 - 1000)	825.TRIO.S	Y	1000 µL (100 - 1000)	5 mL (0.5 - 5)	10 mL (1 - 10)	835.TRIO.Y

### The Acura® manual 826 TwiXS pack

- Two adjustable volume pipettes
- Free shelf pipette holder (see page 37)
- Volume combinations up to 1000 µL
- Six different packs

#### Ordering information - TwiXS pack

Including: shelf pipette holder, sampling of Qualitips®, silicone grease, Q.C. certificates and operating instructions

Pack	Contents (micropipettes)		Cat. No.
E	2 µL (0.1 - 2)	20 µL (2 - 20)	826.TWX.E
G	10 µL (0.5 - 10)	100 µL (10 - 100)	826.TWX.G
H	20 µL (2 - 20)	200 µL (20 - 200)	826.TWX.H
K	50 µL (5 - 50)	200 µL (20 - 200)	826.TWX.K
N	100 µL (10 - 100)	1000 µL (100 - 1000)	826.TWX.N
Q	200 µL (20 - 200)	1000 µL (100 - 1000)	826.TWX.Q



### Smartie caps

#### Colour coding at will

All Acura® pipettes have colour-coded button caps for individual, lab or department identifications. Pick among 14 colours or choose the *smartie* mix for other colour combinations.

Colour	Cat. No.	Colour	Cat. No.
Alternative colour selection (6 / pk)			
White	1.825.710	Rose	1.825.719
Grey	1.825.715	Pink	1.825.720
Vanilla	1.825.716	Purple	1.825.721
Lemon	1.825.712	Ice blue	1.825.722
Yellow	1.825.717	Blue	1.825.713
Orange	1.825.718	Mint	1.825.723
Red	1.825.714	Green	1.825.711
Assorted colours (14 / pk)			1.825.700





Instruments combining high-tech materials with user-friendly ergonomics. Optimal for in- and outdoor environmental analysis, clinical chemistry and cell culture applications, they offer superior performance and make pipetting safer than ever. Three-year warranty.

### The Acura® manual 835

#### Product advantages

- Smart and reliable volume adjustment
- Single-handed volume setting
- Interchangeable nozzle protection filter
- Justip™ adjustable tip ejector\* fitting most tips
- Swift-set user calibration system\*
- Shock, UV-light and autoclaving resistance
- Pasteur pipette fitting 2 and 5 mL models

\* Socorex patented

#### Display always visible ①

Located on the front of the instrument, the display window allows set volume to be visible at all times during pipetting. A comforting reassurance for the user.



①



②



③



④



⑤



⑥

#### Smart and reliable ② volume adjustment

State-of-the-art micrometric volume setting is performed smoothly and precisely by turning push button. Finely machined click-stops and free rotating cap prevent any unwanted volume alteration.

#### Patented tip ejection system ③ ④

Ergonomically positioned, the large surface, soft padded ejector provides for low-pressure activation. In addition, the shaft height adjustment system called Justip™ allows optimal distance setting between ejector and tip.

#### Pasteur pipette adapter ⑤

Adapter nozzles allow fitting of Pasteur pipette on Acura® manual 2 and 5 mL models in addition to polypropylene tips. The adapters have two O-rings guaranteeing proper holding and tightness of standard 2 mL Pasteur pipettes (Ø 7 mm).

### Performance and ordering information

Volume	Division	Inaccuracy (E%)			Imprecision (CV%)			Tip style	Cat. No.
		Min. vol.	Mid. vol.	Max. vol.	Min. vol.	Mid. vol.	Max. vol.		
0.2 – 2 mL	0.002 mL	< ± 1.5%	< ± 1.0%	< ± 0.5%	< 0.5%	< 0.3%	< 0.2%	2 mL	835.02
0.5 – 5 mL	0.01 mL	< ± 1.5%	< ± 1.1%	< ± 0.6%	< 0.6%	< 0.5%	< 0.3%	2 mL + Pasteur	835.02PP <sup>1)</sup>
								5 mL	835.05
1 – 10 mL	0.01 mL	< ± 1.5%	< ± 0.7%	< ± 0.5%	< 0.5%	< 0.3%	< 0.2%	5 mL + Pasteur	835.05PP <sup>1)</sup>
								10 mL	835.10

Performance values obtained with bidest. water at constant temperature (± 0.5°C) comprised between 20 and 25°C in accordance with ISO 8655.

<sup>1)</sup> Model includes Pasteur adapter nozzle.

**835**  
macro

0.2 – 2 mL  
0.5 – 5 mL  
1 – 10 mL



#### Nozzle protection filter ⑥

Protection against liquid overflow and contamination.

See consumables page 35 - 36

Fixed volume micro and macropipettes show the most stable performance. They provide consistent results for any analytical or routine diagnostic tests by eliminating the risk of erroneous volume setting. Three-year warranty.

## The Acura<sup>®</sup> manual 815 / 835F

### Product advantages

- Slim ergonomic design and light weight
- Soft plunger activation
- Justip<sup>™</sup> adjustable tip ejector\* fitting most tips
- User calibration with integrated key
- Colour coded *smartie* cap
- Selection includes macropipette volumes

\* Socorex patented



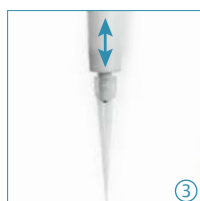
**815 / 835F**  
fixed

1 µL to 10 mL



### Tip ejection - easier than ever

Most ergonomically positioned, ① ② ③ the large surface, soft padded ejector button provides for low-pressure activation. In addition to ease of tip ejection, the shaft height adjustment system called Justip<sup>™</sup> - controlled by efficient click-stops - allows a wide selection of tips to tightly fit the nozzle.



### Performance and ordering information

Volume	Inaccuracy (E%)	Imprecision (CV%)	Tip style	Cat. No.
<b>Acura<sup>®</sup> manual 815</b>				
1 µL	< ± 2.0%	< 1.0%	Ultra 10 µL	815.0001
5 µL	< ± 1.4%	< 1.0%	Ultra 10 µL	815.0005
10 µL	< ± 0.7%	< 0.7%	Ultra 10 µL	815.0010
10Y µL	< ± 0.7%	< 0.8%	200 µL	815.0010Y
15 µL	< ± 0.7%	< 0.5%	200 µL	815.0015
20 µL	< ± 0.75%	< 0.5%	200 µL	815.0020
25 µL	< ± 0.7%	< 0.6%	200 µL	815.0025
30 µL	< ± 0.7%	< 0.6%	200 µL	815.0030
32 µL	< ± 0.7%	< 0.6%	200 µL	815.0032
40 µL	< ± 0.7%	< 0.5%	200 µL	815.0040
50 µL	< ± 0.7%	< 0.4%	200 µL	815.0050
60 µL	< ± 0.7%	< 0.5%	200 µL	815.0060
70 µL	< ± 0.7%	< 0.4%	200 µL	815.0070
75 µL	< ± 0.7%	< 0.4%	200 µL	815.0075
80 µL	< ± 0.7%	< 0.35%	200 µL	815.0080
90 µL	< ± 0.7%	< 0.3%	200 µL	815.0090
100 µL	< ± 0.7%	< 0.3%	200 µL	815.0100
120 µL	< ± 0.7%	< 0.4%	200 µL	815.0120

Volume	Inaccuracy (E%)	Imprecision (CV%)	Tip style	Cat. No.
<b>Acura<sup>®</sup> manual 815 (Continued)</b>				
150 µL	< ± 0.7%	< 0.3%	200 µL	815.0150
200 µL	< ± 0.7%	< 0.3%	200 µL	815.0200
250 µL	< ± 0.7%	< 0.4%	1000 µL	815.0250
300 µL	< ± 0.7%	< 0.4%	1000 µL	815.0300
400 µL	< ± 0.7%	< 0.3%	1000 µL	815.0400
500 µL	< ± 0.7%	< 0.3%	1000 µL	815.0500
600 µL	< ± 0.7%	< 0.3%	1000 µL	815.0600
700 µL	< ± 0.7%	< 0.2%	1000 µL	815.0700
750 µL	< ± 0.7%	< 0.2%	1000 µL	815.0750
800 µL	< ± 0.7%	< 0.2%	1000 µL	815.0800
900 µL	< ± 0.7%	< 0.2%	1000 µL	815.0900
1000 µL	< ± 0.6%	< 0.2%	1000 µL	815.1000

### Acura<sup>®</sup> manual 835F

2 mL	< ± 0.8%	< 0.5%	2 mL	835.F02
2.5 mL	< ± 0.8%	< 0.5%	5 mL	835.F02.5
5 mL	< ± 0.7%	< 0.3%	5 mL	835.F05
10 mL	< ± 0.5%	< 0.2%	10 mL	835.F10

Performance values obtained with bidest. water at constant temperature (± 0.5°C) comprised between 20 and 25°C in accordance with ISO 8655.

See Qualitips<sup>®</sup> page 32 - 34

# Acura<sup>®</sup> manual adjustable micro and macropipettes

## multichannel micropipettes

Built with the users in mind, these pipettes combine high-tech materials with exceptional, user-friendly ergonomics. They extend pipetting possibilities in 96-well microplates and guarantee outstanding performance and results. Three-year warranty.

**855**  
multi

0.5 – 10 µL  
5 – 50 µL  
20 – 200 µL  
40 – 350 µL

### The Acura<sup>®</sup> manual 855

#### Product advantages

- 8- and 12-channel models up to 350 µL
- Light weight and perfect hand fitting
- Precision digital display visible at all time
- Justip™ adjustable tip ejector\* fitting most tips
- Swift-set user calibration system\*
- 360° rotation of volumetric module

\* Socorex patented

#### Most comfortable pipetting

Ergonomic shape, lightweight and ultra-soft plunger travel are key elements of the Acura<sup>®</sup> manual pipettes.

855 models	Weight
8x 0.5 - 10 µL	155 gr
8x 5 - 50 µL	165 gr
8x 20 - 200 µL	165 gr
8x 40 - 350 µL	168 gr
12x 0.5 - 10 µL	184 gr
12x 5 - 50 µL	199 gr
12x 20 - 200 µL	201 gr
12x 40 - 350 µL	203 gr



#### Optimal working position ①

Revolving over 360°, the volumetric module (lower assembly) helps reaching the appropriate hand position.

#### Adjustable tip ejector ②

Position of tip ejector can be adjusted in no time within a 4 mm span to perfectly match with tips used. Bowed shape of ejector head guarantees effort-less, easy sequential tip removal.

#### Multichannel reservoirs ③

Well adapted for multichannel pipettes, the reagent reservoirs offer various shapes and volumes.

See consumables page 35 - 36

#### Performance and ordering information

Volume	Division	Inaccuracy (E%)			Imprecision (CV%)			Tip style	Cat. No.
		Min. vol.	Mid. vol.	Max. vol.	Min. vol.	Mid. vol.	Max. vol.		
8-channel									
0.5 – 10 µL	0.01 µL	< ± 3.5% <sup>1)</sup>	< ± 2.5%	< ± 1.5%	< 3.0% <sup>1)</sup>	< 2.0%	< 1.0%	Ultra 10 µL	855.08.010
5 – 50 µL	0.1 µL	< ± 1.0%	< ± 0.9%	< ± 0.8%	< 1.0%	< 0.7%	< 0.4%	200 µL	855.08.050
20 – 200 µL	0.2 µL	< ± 0.9%	< ± 0.8%	< ± 0.7%	< 0.6%	< 0.5%	< 0.3%	200 µL	855.08.200
40 – 350 µL	0.4 µL	< ± 1.0%	< ± 0.9%	< ± 0.8%	< 0.6%	< 0.5%	< 0.3%	350 µL	855.08.350
12-channel									
0.5 – 10 µL	0.01 µL	< ± 3.5% <sup>1)</sup>	< ± 2.5%	< ± 1.5%	< 3.0% <sup>1)</sup>	< 2.0%	< 1.0%	Ultra 10 µL	855.12.010
5 – 50 µL	0.1 µL	< ± 1.0%	< ± 0.9%	< ± 0.8%	< 1.0%	< 0.7%	< 0.4%	200 µL	855.12.050
20 – 200 µL	0.2 µL	< ± 0.9%	< ± 0.8%	< ± 0.7%	< 0.6%	< 0.5%	< 0.3%	200 µL	855.12.200
40 – 350 µL	0.4 µL	< ± 1.0%	< ± 0.9%	< ± 0.8%	< 0.6%	< 0.5%	< 0.3%	350 µL	855.12.350

Performance values obtained with bidest. water at constant temperature (± 0.5°C) comprised between 20 and 25°C in accordance with ISO 8655.

<sup>1)</sup> measured at 1 µL







Air displacement pipette with two pre-calibrated steps allows subsequent pipetting of 1 and 0.1 mL of the same liquid. Metal nozzle fits long straw tips to aspirate from narrow or deep reservoirs (i.e. Stomacher<sup>®</sup> bags). Ideal alternative to the graduated glass pipettes when performing serial 1:10 dilutions in bacteriology. Three-year warranty.

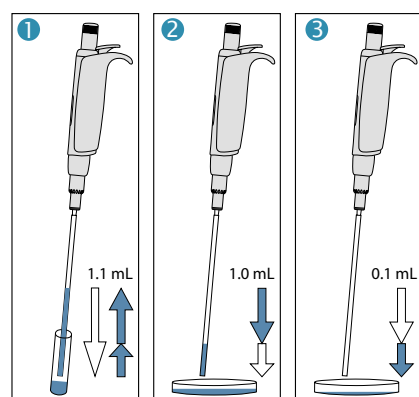
810

1 + 0.1 mL

### The Acura<sup>®</sup> manual 810

#### Product advantages

- Two pre-calibrated fixed volumes – no setting required
- Smooth activation, excellent ergonomics
- Interchangeable PE nozzle protection filter
- Justip<sup>™</sup> system for height adjustment of tip ejector
- Independent calibration for each volume
- Easy maintenance, cleaning and disinfection
- Fully autoclavable 121°C / 250°F



#### Simple operation

- 1 Depress plunger button in full, then release slowly to aspirate 1.1 mL
- 2 Depress plunger button to first stop, thus dispensing 1 mL in Petri dish
- 3 Depress plunger button to second stop, thus dispensing residual 0.1 mL in next Petri dish



#### No setting required<sup>①</sup>

Two fixed volumes within one plunger travel.

#### Innovative dual calibration<sup>②</sup>

Both volumes of 1 mL and 0.1 mL can be calibrated independently from each other. Calibration switch protected by seal sticker.



#### Justip<sup>™</sup> ejector<sup>③</sup>

Turn left or right to adjust ejector to straw tip position on the nozzle.

#### Straw tips<sup>④</sup>

First class polypropylene. Size 190 mm. Specially designed for narrow vials and Stomacher<sup>®</sup> bags. Large diameter (4mm) prevents blocking by particles in suspension.



#### Performance and ordering information - Instrument

Volume	Inaccuracy (E%)	Imprecision (CV%)	Cat. No.
1 mL	< ± 0.5%	< 0.4%	810.1100
0.1 mL	< ± 2.0%	< 2.5%	

Performance values obtained with bidest. water at constant temperature (± 0.5°C) comprised between 20 and 25°C in accordance with ISO 8655.

#### Ordering information - Accessories

Description	Packaging	Cat. No.
Straw tips, polypropylene, sterilized (L: 190 mm, Ø:4 mm)	40x 25 / pk	313.1119.40
Nozzle protection filter, PE material	100 / pk	322.810
Work station 340 for 3 pipettes	1 / pk	320.340
Shelf pipette holder 332 for 2 pipettes	1 / pk	320.332
Shelf pipette holder 332 for 2 pipettes	4 / pk	320.332.4

# Calibra® digital digital setting micro and macropipettes



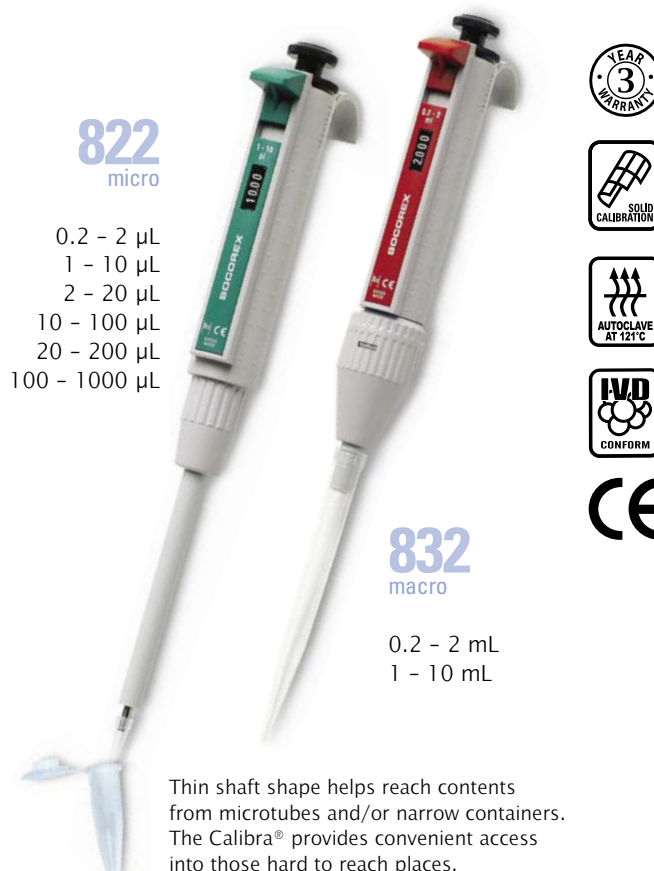
The combination of instant volume adjustment, mechanical precision and ease of use makes the Calibra® *digital* a most reliable and robust micropipette line in the market.

Three-year warranty.

## The Calibra® *digital* 822 / 832

### Product advantages

- Winding-free, instant volume adjustment
- Long term performance and calibration stability
- Robust, long lasting construction
- Shock, UV-light and autoclaving resistance
- Reliable user calibration
- Minimal maintenance requirements
- Interchangeable nozzle filter in all macro models
- Pasteur pipette adapter (Cat. No. 1.835.631) included with 2 mL model



### Instant volume setting

Twin cam system fitted with pre-calibrated steps providing for true digital volume entry and numerical display.

The dual incrementation allows fast volume setting without tedious winding.



### Key volume adjustment ①

Example: from 10 to 50 µL in half a revolution of the setting wheel placed in its normal position.



### Fine-tuning adjustment ②

Example: from 50 to 55.5 µL in half a revolution of the setting wheel in its "pulled" position.

## Performance and ordering information

Volume	Division	Inaccuracy (E%)			Imprecision (CV%)			Tip style	Cat. No.
		Min. vol.	Mid. vol.	Max. vol.	Min. vol.	Mid. vol.	Max. vol.		
Calibra® digital 822									
0.2 – 2 µL	0.1 µL	< ± 6.0% <sup>1)</sup>	< ± 4.0%	< ± 2.0%	< 5.0% <sup>1)</sup>	< 3.3%	< 1.5%	Ultra 10 µL	822.0002
1 – 10 µL	0.05 µL	< ± 2.5%	< ± 1.5%	< ± 1.0%	< 2.0%	< 1.3%	< 0.5%	Ultra 10 µL	822.0010
1 – 10 µL	0.05 µL	< ± 2.5%	< ± 1.5%	< ± 1.0%	< 2.5%	< 1.6%	< 0.7%	200 µL	822.0010Y
2 – 20 µL	0.1 µL	< ± 2.5%	< ± 1.5%	< ± 1.0%	< 1.7%	< 1.1%	< 0.5%	200 µL	822.0020
10 – 100 µL	0.5 µL	< ± 1.5%	< ± 0.9%	< ± 0.8%	< 1.0%	< 0.6%	< 0.2%	200 µL	822.0100
20 – 200 µL	1.0 µL	< ± 1.5%	< ± 0.9%	< ± 0.6%	< 0.6%	< 0.4%	< 0.2%	200 µL	822.0200
100 – 1000 µL	5.0 µL	< ± 1.5%	< ± 0.6%	< ± 0.5%	< 0.5%	< 0.4%	< 0.2%	1000 µL	822.1000
Calibra® digital 832									
0.2 – 2 mL	0.01 mL	< ± 1.5%	< ± 1.0%	< ± 0.5%	< 0.5%	< 0.3%	< 0.2%	2 mL	832.02
1 – 10 mL	0.1 mL	< ± 1.5%	< ± 1.0%	< ± 0.5%	< 0.3%	< 0.3%	< 0.15%	10 mL	832.10

Performance values obtained with bidest. water at constant temperature ( $\pm 0.5^\circ\text{C}$ ) comprised between 20 and 25°C in accordance with ISO 8655.

1) measured at 0.5 µL

# Calibra® digital digital setting multichannel pipettes

8- and 12-channel micropipettes with winding-free, instant volume adjustment extend pipetting possibilities in microplates. Three-year warranty.

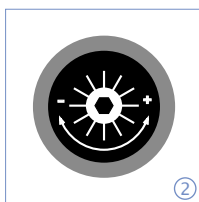
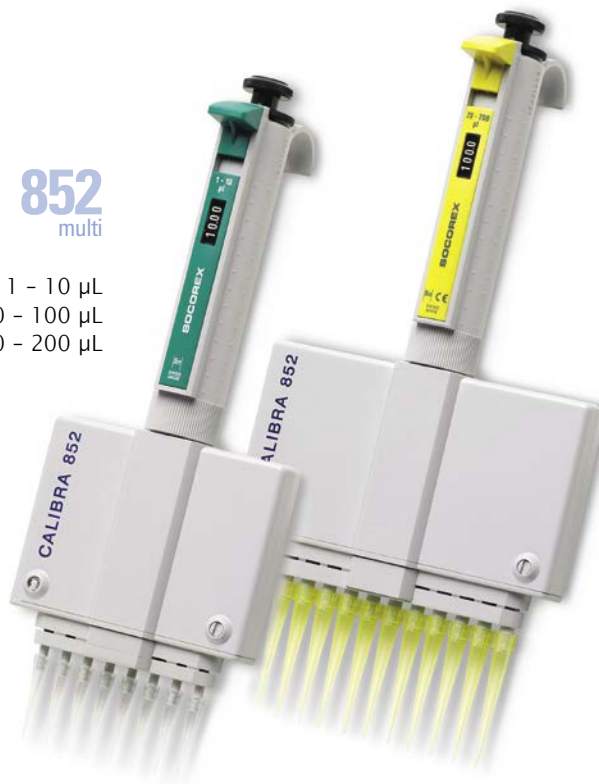
**852**  
multi

1 - 10 µL  
10 - 100 µL  
20 - 200 µL

## The Calibra® digital 852

### Product advantages

- Winding-free, instant volume adjustment
- Long term performance and calibration stability
- Lower assembly rotates 360° for optimal working comfort
- Easy sequential tip ejection
- Calibration simple to perform by user
- Shock, UV-light and autoclaving resistance



### Easy in-lab calibration ①②

The calibration screw is located under the rubber pad. Engraved graduations help calibrate instrument quickly and precisely. Calibration key supplied with the instrument.

### 360° rotation ③

In addition to ergonomic hand fitting, the pipette lower assembly revolves for added user comfort.

### Sequential tip ejection ④

Special shape of ejector head guarantees effortless, sequential easy tip ejection.

### Multichannel reservoirs ⑤

Well adapted for multichannel pipettes, the reagent reservoirs come in various shapes and volumes. See page 36.

See Qualitips® page 32 - 34

See pipette stands page 37 - 38

## Performance and ordering information

Volume	Division	Inaccuracy (E%)			Imprecision (CV%)			Cat. No.
		Min. vol.	Mid. vol.	Max. vol.	Min. vol.	Mid. vol.	Max. vol.	
8-channel								
1 - 10 µL	0.05 µL	< ± 3.5%	< ± 2.5%	< ± 1.5%	< 3.0%	< 2.0%	< 1.0%	852.08.010
10 - 100 µL	0.5 µL	< ± 1.0%	< ± 0.9%	< ± 0.7%	< 1.0%	< 0.7%	< 0.4%	852.08.100
20 - 200 µL	1.0 µL	< ± 0.9%	< ± 0.9%	< ± 0.7%	< 0.6%	< 0.4%	< 0.3%	852.08.200
12-channel								
10 - 100 µL	0.5 µL	< ± 1.0%	< ± 0.9%	< ± 0.7%	< 1.0%	< 0.7%	< 0.4%	852.12.100
20 - 200 µL	1.0 µL	< ± 0.9%	< ± 0.9%	< ± 0.7%	< 0.6%	< 0.4%	< 0.3%	852.12.200

Performance values obtained with bidest. water at constant temperature (± 0.5°C) comprised between 20 and 25°C in accordance with ISO 8655.



# Acura® capillar positive displacement micropipettes

positive displacement



High performance positive displacement micropipettes with interchangeable glass capillary tube and ETFE tipped plunger. The soft shaped handle and smooth plunger activation provides for enhanced hand comfort while handling viscous liquids, foaming solutions or volatile solvents. Five models cover a range from 1 to 200 µL. Three-year warranty.



## 846

### The Acura® capillar 846

#### Product advantages

- Slim body shape, comfortable finger rest
- Smooth plunger activation
- Reliable, step-wise volume adjustment
- Colour codes matching on pipettes, plungers and capillaries
- Stainless steel, ETFE tipped plunger

1 - 5 µL  
5 - 25 µL  
10 - 50 µL  
60 - 100 µL  
100 - 200 µL

#### Enhanced pipetting comfort ①

Instrument slim shape fits any hand. Comfortable hook enables pipette to rest naturally on finger. Well engineered spring system reduces plunger force requirement.



#### Pre-set volumes ②

Each pipette has five, easy to adjust pre-set volumes. Clear volume reading on pipette barrel.

#### Colour coding ③

Pipette, plunger tip and glass capillary bear colour coding for easy volume identification.

#### ETFE tipped plunger ④

Chemically inert ETFE material offers excellent resistance when coming in direct contact with liquids.

#### Workstation 340 ⑤

For up to three pipettes, any Socorex models. (Cat. No. 320.340).

#### Performance and ordering information - Instruments

Volumes	Inaccuracy (E%)			Imprecision (CV%)			Cat. No.
	Min. vol.	Mid. vol.	Max. vol.	Min. vol.	Mid. vol.	Max. vol.	
1-2-3-4-5 µL	< ± 3.0%	< ± 2.3%	< ± 2.0%	< 2.5%	< 2.0%	< 1.2%	846.005
5-10-15-20-25 µL	< ± 1.5%	< ± 1.2%	< ± 0.8%	< 1.0%	< 0.9%	< 0.6%	846.025
10-20-30-40-50 µL	< ± 1.2%	< ± 1.0%	< ± 0.7%	< 0.8%	< 0.7%	< 0.4%	846.050
60-75-90-100-100 µL	< ± 0.7%	< ± 0.7%	< ± 0.7%	< 0.6%	< 0.5%	< 0.3%	846.100
100-120-150-175-200 µL	< ± 0.7%	< ± 0.7%	< ± 0.7%	< 0.3%	< 0.3%	< 0.3%	846.200

Performance values obtained with bidist. water at constant temperature ( $\pm 0.5^\circ\text{C}$ ) comprised between 20 and 25°C in accordance with ISO 8655. Model 846 not autoclavable.

#### Ordering information - Accessories

Colour code	Packaging	Cat. No.
<b>Spare glass capillaries</b>		
White	200 / pk	341.005
2x white	200 / pk	341.025
Green	200 / pk	341.050
Blue	200 / pk	341.100
Red	100 / pk	341.200

Colour code	Packaging	Cat. No.
<b>Spare plungers</b>		
Steel	5 / pk	342.005
White	5 / pk	342.025
Green	5 / pk	342.050
Blue	5 / pk	342.100
Red	5 / pk	342.200

# Stepper™ repeater pipette

Highly comfortable pipette intended for reliable repeat dispensing within 10 to 5000 µL. Unique trigger action mechanism eliminates thumb fatigue. Selected materials offer outstanding shock resistance. Compact shape greatly limits internal instrument contamination. Large selection among 53 different volumes; up to 73 doses per filling. Two-year warranty.

## The Stepper™ 411

### Product advantages

- 4-finger activation
- Setting knobs bear clear indication of volumes and number of aliquots
- Three positive displacement syringes, colour coded
- Self-locking mechanism
- Ecostep™ sterilized syringes in *bioproof* version

411  
10 – 5000 µL



### Fingertip activation<sup>③</sup>

User friendly 4-finger trigger action eliminates thumb fatigue during repeat dosing. Self-locking mechanism prevents false delivery if liquid for the desired dose is insufficient.



### Clear setting indication<sup>①②</sup>

After inserting disposable syringe, select appropriate volume. Markings on interchangeable selector buttons allow direct reading of set volume and corresponding number of aliquots.



### Ordering information

Description	Packaging	Cat. No.
Stepper™ 411 incl. 3 colour coded selector buttons, adapter, Ecostep™ syringe samples	1 / pk	411.5000
Replacement adapter for red Ecostep™ syringe	5 / pk	1.411.7
Stand for one Stepper <sup>④</sup>	1 / pk	320.411

### Performance and ordering information – Ecostep™ syringes

Non sterile syringes are supplied in bulk. Sterilized, single wrapped *bioproof* version with high biological purity grade, each batch is human DNA, DNase, RNase and Pyrogen (endotoxin) free certified.

Volume	Syringe capacity	Performance at	Inaccuracy (E%)	Imprecision (CV%)	Sterilized & <i>bioproof</i>	Packaging	Cat. No.
10 – 100 µL	0.75 mL	20 µL	< ± 1.5%	< 1.5%	no	100 / box	316.010
		100 µL	< ± 1.0%	< 0.8%	yes	100 x 1 / box	316.010.9
50 – 500 µL	3.75 mL	100 µL	< ± 1.0%	< 1.0%	no	100 / box	316.050
		500 µL	< ± 0.5%	< 0.5%	yes	100 x 1 / box	316.050.9
500 – 5000 µL	37.5 mL	1000 µL	< ± 0.8%	< 1.2%	no	100 / box	316.500
		5000 µL	< ± 0.5%	< 0.4%	yes	100 x 1 / box	316.500.9

Performance values obtained with bidist. water at constant temperature (± 0.5°C) comprised between 20 and 25°C in accordance with method described in EN ISO 8655.

### Ecostep *bioproof*™

Single wrapped sterilized high purity grade syringes. Each batch is tested by independent laboratories for sterility, and certified free of detectable DNase, RNase, human DNA and Pyrogen.



No. of aliquots	Volume µL	Volume µL	Volume µL
73	10	50	500
49	15	75	750
36	20	100	1000
29	25	125	1250
24	30	150	1500
20	35	175	1750
18	40	200	2000
15	45	225	2250
14	50	250	2500
12	55	275	2750
11	60	300	3000
10	65	325	3250
9	70	350	3500
8	75	375	3750
8	80	400	4000
7	85	425	4250
7	90	450	4500
7	95	475	4750
6	100	500	5000

# Acura<sup>®</sup> manual self-refilling microdispenser pipette

microdispenser



Hand-held, self-refilling microdispenser intended for repeat distribution of microliter volumes. Carefully selected materials ensure durability and resistance to aggressive media. Instrument combines easy handling of a regular micropipette with flexibility of a repeater pipette. There is no need for plastic tips or consumables, which may represent substantial savings. Three-year warranty.

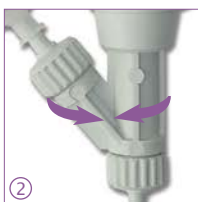
## The Acura<sup>®</sup> manual 865

### Product advantages

- Excellent ergonomics, soft plunger activation
- Large volume display
- Easy in-lab calibration
- No need for consumables
- Autoclavable fully assembled at 121°C / 250°F
- Versatile feeding through bottle, tubing or syringe

### Excellent ergonomics ①

Instrument shape and lightweight offer most convenient pipetting comfort. Smooth plunger activation drastically reduces hand fatigue.



### Convenient dispensing ②

Reliable valve system ensures high performance dispensing, dose after dose. It revolves to allow selection of the best working position.

### Swift-set calibration system\* ③ ④

Easy and precise system with integrated key and locking mechanism, making tedious procedures a thing of the past.

\* Socorex patented

Chemical compatibility see page 25  
Needles and cannulas see page 28



Protective calibration  
seal sticker

## Performance and ordering information – Instruments

Including: 90 cm silicone tubing, SS blunt end cannula, female Luer inlet valve cap, Q.C. certificate and operating instructions.

Volume	Division	Inaccuracy (E%)			Imprecision (CV%)			Cat. No.
		Min. vol.	Mid. vol.	Max. vol.	Min. vol.	Mid. vol.	Max. vol.	
5-50 µL	0.1 µL	< ± 5.0%	< ± 3.5%	< ± 1.5%	< 2.0%	< 1.4%	< 0.4%	865.0050
20-200 µL	0.2 µL	< ± 2.5%	< ± 1.8%	< ± 1.0%	< 1.5%	< 1.0%	< 0.3%	865.0200
100-1000 µL	1.0 µL	< ± 1.5%	< ± 1.1%	< ± 0.6%	< 0.6%	< 0.4%	< 0.2%	865.1000

Performance values obtained with bidest. water at constant temperature (± 0.5°C) comprised between 20 and 25°C in accordance with ISO 8655. Values altered using manifold.

865

5 – 50 µL  
20 – 200 µL  
100 – 1000 µL



### Choice of feeding sources

Supplied with 90 cm silicone tubing, the instrument also fits optional feeding sources: ① bottle, ② vial, ③ syringe.

### Great distribution flexibility

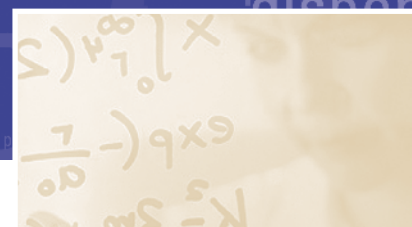
Outlet nozzle fits any Luer Lock needles and cannulas. Optional PTFE cannula provides enhanced chemical resistance. Use 4- or 8-channel manifold when dispensing into microplates.

## Ordering information – Accessories

Description	Packaging	Cat. No.
Reservoir*, 30 mL, PP, Luer	1 / pk	1.861.631
Reservoir*, 30 mL, PTFE, Luer	1 / pk	1.861.21T
Vial holder*, Luer	1 / pk	1.861.925
Inlet valve cap*, female Luer (for syringe)	1 / pk	1.861.720
Outlet valve cap*, Luer Lock	1 / pk	1.861.569
PTFE delivery cannula*	1 / pk	1.861.E32
Manifold*, 4-channel, Luer Lock, stainless steel (9mm spacing)	1 / pk	1.170.054
Manifold*, 8-channel, Luer Lock, stainless steel (20mm spacing)	1 / pk	1.170.058
Work station 340 for 3 pipettes	1 / pk	320.340

\*Autoclavable

# Acurex™ compact low-profile dispensers



Compact dispensers for safe reagent handling, adapted to refrigerator storage as well as water bath heating. Dosing mechanism entirely protected inside reservoir. Manufactured and tested to fully comply with the latest regulations on instrument safety and precision. Volumes range from 0.2 to 30 mL. Two-year warranty.



## The Acurex™ compact 501

### Product advantages

- Integrated dosing mechanism
- Simple, robust construction
- Retractable graduated column reduces instrument height
- Fluid path materials excluding any metal
- Choice of four reservoir sizes
- Fully autoclavable at 121°C / 250°F

501

0.2 – 2 mL  
0.4 – 5 mL  
1 – 10 mL  
1 – 30 mL



Chemical compatibility  
see page 25



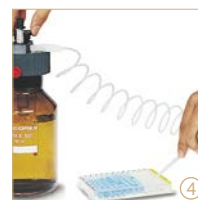
### Space saving low profile ①②

The graduated column is retractable for height reduction, making the dispenser ideal for storage in refrigerators.



### Glass reservoir ③

Amber glass offers optimal light protection.



### Autoclavable extension tubing ④

PTFE Jet-Pen™ and tubing help dispense into vessels with maximum comfort within a 60 cm distance. For 1 and 2 L reservoirs (Cat. No. 1.523).

## Performance and ordering information

Volume	Division	Imprecision (CV%)			Reservoir capacity	Cat. No.
		Min. vol.	Mid. vol.	Max. vol.		
0.2 – 2 mL	0.1 mL	< 0.5%	< 0.35%	< 0.1%	250 mL	501.02025
0.2 – 2 mL	0.1 mL	< 0.5%	< 0.35%	< 0.1%	1000 mL	501.021
0.2 – 2 mL	0.1 mL	< 0.5%	< 0.35%	< 0.1%	2000 mL	501.022
0.4 – 5 mL	0.2 mL	< 0.5% <sup>1)</sup>	< 0.35%	< 0.1%	500 mL	501.0505
0.4 – 5 mL	0.2 mL	< 0.5% <sup>1)</sup>	< 0.35%	< 0.1%	1000 mL	501.051
0.4 – 5 mL	0.2 mL	< 0.5% <sup>1)</sup>	< 0.35%	< 0.1%	2000 mL	501.052
1 – 10 mL	0.2 mL	< 0.5%	< 0.35%	< 0.1%	1000 mL	501.101
1 – 10 mL	0.2 mL	< 0.5%	< 0.35%	< 0.1%	2000 mL	501.102
1 – 30 mL	1.0 mL	< 0.5% <sup>2)</sup>	< 0.35%	< 0.1%	2000 mL	501.302

Performance values obtained with bidest. water at constant temperature ( $\pm 0.5^\circ\text{C}$ ) comprised between 20 and  $25^\circ\text{C}$  in accordance with ISO 8655. <sup>1)</sup> measured at 0.5 mL <sup>2)</sup> measured at 3 mL

## Chemically inert materials

All parts in contact with the liquid are made from chemically inert materials:

Parts	Materials
Valve	Pyrex glass and synthetic ruby
Barrel	Neutral glass
Plunger	PTFE-coated glass
Reservoir	Amber glass
Delivery jet and union	PVDF / FEP / PFA



# Calibrex™ digital bottle-top dispensers

Designed for performance handling of liquids from a large variety of bottles and flasks, the Calibrex™ dispenser combine the latest in dosing technology, high-tech materials and ergonomic design. They are manufactured and tested to fully comply with current safety regulations. Fixed versions also available in any volume within these ranges. Two-year warranty.

## The Calibrex™ 520

### Product advantages

- Superior chemical resistance
- Long-lasting performance stability
- Simple construction – no tool for disassembling
- Instant volume setting
- In-lab calibration
- Autoclavable at 121°C / 250°F fully assembled

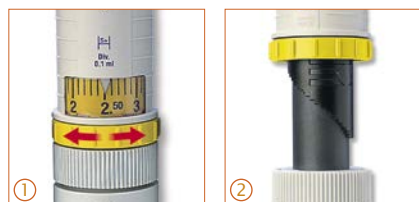
520

0.25 – 2 mL  
1 – 5 mL  
1 – 10 mL



### Friendly digital volume setting ①②

Fast and precise volume adjustment. Efficient click-stop mechanism prevents unwanted alteration.



Large display is easy to read; the window adjusts to desired side of instrument body. Each step on the cylindrical cam is pre-calibrated and corresponds to one division on the volume adjustment scale.

### Optimised working position ③

The instrument rotates 360° for adequate positioning on top of the bottle.



### Air filter ④

Air inlet can be enlarged to receive a membrane filter, if airborne contamination is a concern.

### In-lab calibration ⑤

Calibrex™ dispensers are factory calibrated and can be easily recalibrated by means of a dedicated adjustment screw.



### Easy maintenance ⑥

Disassembling / reassembling is facilitated by the limited number of well-connected parts - no tool needed.

### Superior material selection

Special attention is paid to component materials, providing for long instrument life. Parts coming in contact with the liquid flow are chemically inert.

Large selection of bottles  
see page 24

### Performance and ordering information

Calibrex™ have a 32 mm base thread. They come with three adapters: 28, 40, 45 mm and feed tube 300 mm.

Volume	Division	Inaccuracy (E%)			Imprecision (CV%)			Cat. No. Adj. volume	Cat. No. Fixed volume*
		Min. vol.	Mid. vol.	Max. vol.	Min vol.	Mid. vol.	Max. vol.		
0.25 – 2 mL	0.05 mL	< ± 3.0%	< ± 1.8%	< ± 0.6%	< 0.5%	< 0.35%	< 0.1%	520.002	520.F02
1 – 5 mL	0.1 mL	< ± 2.0%	< ± 1.3%	< ± 0.6%	< 0.5%	< 0.35%	< 0.1%	520.005	520.F05
1 – 10 mL	0.25 mL	< ± 1.5%	< ± 1.1%	< ± 0.6%	< 0.5%	< 0.35%	< 0.1%	520.010	520.F10

\* Specify desired fixed volume within instrument range when ordering. Performance values obtained with bidist. water at constant temperature (± 0.5°C) comprised between 20 and 25°C in accordance with ISO 8655.

Parts	Materials
Feed tube	PTFE
Intake valve	Ceramic
Valve balls	Pyrex glass
Valve spring	Platinum-iridium
Barrel	Borosilicate glass
Barrel plate / base	PTFE
Plunger	Glass with PFA coating
Outlet valve	Ceramic
Body	ETFE
Delivery jet assembly	PTFE/ETFE

# Calibrex™ bottle-top dispensers

The new generation of robust instruments with excellent chemical resistance, high performance and easy maintenance. Fitting most reagent bottles, it enables safe and reproducible dispensing within volumes up to 25, 50 and 100 mL. Choose between the *organo* and the *solutae* models for adequate resistance to liquid dispensed. Two-year warranty

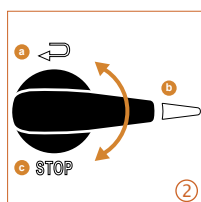
## The Calibrex™ 525 / 530

### Product advantages

- Selection between two different models
- Permanent fluid path visibility
- Integrated calibration system
- Choice of adjustment button with each unit
- Flow control system with stopcock (optional)
- QR code accessing compatibility chart
- Autoclavable at 121°C / 250°F fully assembled

## 525 / 530

2.5 – 25 mL  
5 – 50 mL  
10 – 100 mL



### Ease of use ①

Smooth aspiration and distribution for trouble-free routine dispensing. Dual scale enables volume reading from a wide angle.

### Flow control stopcock ②

Next to its dispensing position (b), device enables liquid priming and recycling (a) without reagent loss or contamination. Locking position (c) for safe dispenser transportation.

### Choice of setting buttons

③ Sliding cursor softly moves up and down scale and precisely stops at desired graduation. Installed on each unit. ④ Alternative classical screw button supplied with each dispenser as an accessory. Easy to exchange by user.

### Permanent visibility ⑤

Safety transparent thick sleeve around barrel and delivery jet window allow liquid flow monitoring.

### Optimal working position ⑥

The instrument rotates 360° for adequate positioning on the bottle. Free rotating dispenser body makes volume clearly visible from any position.

# Calibrex™ bottle-top dispensers

organo  
solutae

## Model differentiation

**organo**

Organics

Non-crystallizing sol.

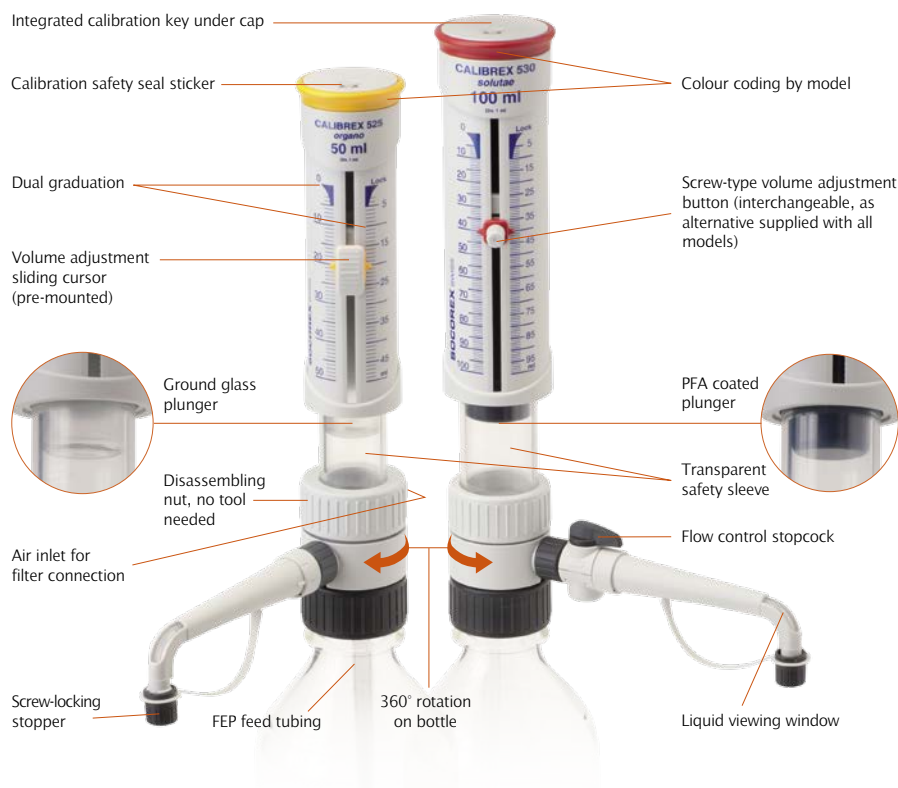
Inert reagents

Salt solutions

Strong acids\* & bases

**solutae**

\* Except hydrofluoric acids (HF)



## Material selection

Parts in contact with liquid flow are chemically inert, providing for stability and long instrument life.

Parts	525 organo	530 solutae
Feed tubing	FEP	
Valve body	Ceramic	
Valve balls	Ceramic	
Valve spring	Platinum-iridium	
Valve plate	PTFE	
Barrel	Borosilicate glass	
Plunger	Ground glass	PFA coated glass
Connecting body	ETFE	
Delivery jet	FEP / PCTFE	
Stopper	ETFE	

Chemical compatibility see page 25

## Chemical resistance ④

Printed QR code for instant access to chemical resistance chart.



### Air filter ①

Air inlet can be enlarged to receive a membrane filter, if airborne contamination is a concern.



### Easy In-lab calibration

- ② Access to mechanism protected by safety seal sticker.
- ③ Integrated key located under plunger cap. Engraved +/- arrows for easy and precise setting.



### Maintenance ⑤

Disassembling/reassembling facilitated by limited number of parts – no tool needed. Key elements such as valves, plunger, barrel and delivery jet removable in seconds for cleaning. Fully autoclavable at 121°C / 250°F.

## Performance and ordering information - Calibrex™ 525 and 530

Supplied with 45 mm base thread, 120 mm delivery jet and stopper, 350 mm feed tube, alternative screw-type volume setting button, three bottle neck adapters (32, 38 and 40 mm), QC certificate and operating instructions. All models available with and without stopcock.

Range mL	Division mL	Inaccuracy (E%)			Imprecision (CV%)			Calibrex™ <i>organo</i> 525		Calibrex™ <i>solutae</i> 530	
		Min.vol	Mid.vol	Max.vol	Min.vol	Mid.vol	Max.vol	Regular (no stopcock)	With stopcock	Regular (no stopcock)	With stopcock
Adjustable volume models											
2.5–25	0.5	< ± 1.5%	< ± 1.1%	< ± 0.6%	< 0.5%	< 0.35%	< 0.1%	525.025	525.025FC	530.025	530.025FC
5–50	1.0	< ± 1.5%	< ± 1.1%	< ± 0.6%	< 0.5%	< 0.35%	< 0.1%	525.050	525.050FC	530.050	530.050FC
10–100	1.0	< ± 1.5%	< ± 1.1%	< ± 0.6%	< 0.5%	< 0.35%	< 0.1%	525.100	525.100FC	530.100	530.100FC
Fixed volume models (specify desired fixed volume within dispenser range)											
2.5–25	0.5	< ± 1.5%	< ± 1.1%	< ± 0.6%	< 0.5%	< 0.35%	< 0.1%	525.F025	525.F025FC	530.F025	530.F025FC
5–50	1.0	< ± 1.5%	< ± 1.1%	< ± 0.6%	< 0.5%	< 0.35%	< 0.1%	525.F050	525.F050FC	530.F050	530.F050FC
10–100	1.0	< ± 1.5%	< ± 1.1%	< ± 0.6%	< 0.5%	< 0.35%	< 0.1%	525.F100	525.F100FC	530.F100	530.F100FC

Performance values obtained by a smooth and steady pace movement, with bidest. water at constant temperature ( $\pm 0.5^\circ\text{C}$ ) comprised between 20 and  $25^\circ\text{C}$ , according to EN ISO 8655. Warning: omission to untighten connecting body ring before autoclaving, and / or over-tightening ring when dispensing, may reduce performance.



Extension tubing kit  
(workstation not included)



Workstation for small bottle



Workstation and feed tubing  
for remote aspiration

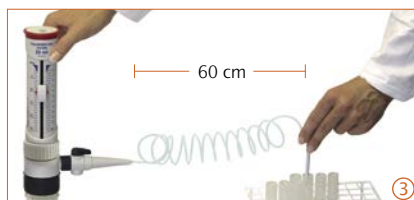
## Flow control stopcock ①

Device compatible with any Calibrex™ 525 / 530. Enables liquid priming and recycling without reagent loss or contamination. No tool needed to assemble or to remove for cleaning. Fully autoclavable.



## Delivery jet ②

Standard (120 mm) and extended (150 mm) assemblies are exchangeable without any tool. Fully autoclavable.



## Extension tubing ③

Tubing and delivery Jet-Pen™, help dispense into vessels with maximum comfort within a 60 cm distance. No tool needed to assemble or to remove for cleaning. Fully autoclavable.

Description	Pack	Cat. No.
Flow control stopcock, fits Calibrex™ 525 / 530		
For 25, 50 and 100 mL models	1 / pk	1.525.546
Delivery jet assembly, 120 mm, fits Calibrex™ 525/530		
For 25 mL dispenser	1 / pk	1.525.120
For 50, 100 mL dispensers	1 / pk	1.525.121
Delivery jet assembly, extended, 150 mm, fits Calibrex™ 525/530		
For 25 mL dispenser	1 / pk	1.525.150
For 50, 100 mL dispensers	1 / pk	1.525.151

Description	L./Mat.	int. Ø	Cat. No.
Extension tubing and Jet-Pen™			
Fits Calibrex™ 520/521 up to 20 mL	600 mm PTFE	2.2 mm	1.524
Fits Calibrex™ 525/530 up to 25 mL	600 mm FEP/PCTFE	4 mm	1.525.625
Fits Calibrex™ 525/530 50 and 100 mL	600 mm FEP/PCTFE	4 mm	1.525.650

## Dispenser stability ④

Stand holds dispenser when screwed on small-size bottle.

## Remote aspiration ⑤

Work station facilitates liquid intake from drum or other remote container (< 10 m distance, < 2 m elevation).

Description	Pack	Cat. No.
Work station for dispenser stability		
Fits Calibrex™ 520 dispenser	1 / pk	320.SB050
Fits Calibrex™ 525/530 dispensers	1 / pk	320.SB100
Remote aspiration work station and feed tubing		
Work station for Calibrex™ 520 disp.*	1 / pk	320.BC050
Work station for Calibrex™ 525/530 disp.*	1 / pk	320.BC100
Feed tubing with connector for Calibrex™ 525/530	1 / pk	1.525.581

\* Dispenser and feed tubing / connector to be ordered separately



## Reagent bottles ①

Large selection of glass and polyethylene reagent bottles, each supplied with one PP screw cap. Perfectly adapted with all bottle top dispensers. Corresponding neck adapters supplied with the dispensers.

Shape	Volume	Neck, ext. Ø	Cat. No.
-------	--------	--------------	----------

### Amber glass<sup>1)</sup>

Square	100 mL	32 mm	314.0100
Square	250 mL	32 mm	314.0250
Square	500 mL	32 mm	314.0500
Square	1000 mL	45 mm	314.1000
Round	2500 mL	45 mm	314.2500

### Amber glass, with handle<sup>1)</sup>

Round	2500 mL	45 mm	314.2500H
-------	---------	-------	-----------

### PE-coated Amber glass<sup>2)</sup>

Square	500 mL	32 mm	314.0500PE
Square	1000 mL	45 mm	314.1000PE
Round	2500 mL	45 mm	314.2500PE

### Clear Borosilicate glass<sup>1)</sup>

Round	250 mL	45 mm	314.0250C
Round	500 mL	45 mm	314.0500C
Round	1000 mL	45 mm	314.1000C
Round	2000 mL	45 mm	314.2000C

### Clear Pyrex glass, with connection neck<sup>1)</sup>

Round	500 mL	32 mm	314.0500P
-------	--------	-------	-----------

### Polyethylene<sup>2)</sup>

Square	250 mL	25 mm	315.0250
Square	500 mL	25 mm	315.0500
Square	1000 mL	32 mm	315.1000
Square	2500 mL	45 mm	315.2500

<sup>1)</sup> autoclavable, <sup>2)</sup> not autoclavable



## Calibration seal stickers ②

Autoclavable seal sticker protects access to the calibration mechanism of Calibrex™ 525/530 models.

Description	Pack	Cat. No.
Safety seal sticker	25 / pk	1.525.525
Safety seal sticker	100 / pk	1.525.526



## Replacement tubing ③

Feed tubing available either cut to the standard size, or uncut by the meter.

Description	Length	int. Ø	Cat. No.
<b>Feed tubing, FEP, for Calibrex™ 525/530</b>			
For all sizes, cut	350 mm	7 mm	525.350
For all sizes, by the meter, uncut	specify	7 mm	525.706
<b>Feed tubing, PTFE, for Calibrex™ 520/521</b>			
For 520 all sizes, cut	300 mm	5 mm	511.707
For 521, 20 mL, cut	300 mm	7.5 mm	521.621
For 521, 50 mL, cut	300 mm	10 mm	521.622
For 521, 100 mL, cut	375 mm	10 mm	521.623
For 520 all sizes, by the meter, uncut	specify	5 mm	511.709
For 521, 20 mL, by the meter, uncut	specify	7.5 mm	521.705
For 521, 50 and 100 mL, by the meter, uncut	specify	10 mm	521.706

## Bottle-neck adapters

④ Calibrex™ 525/530 have a 45 mm base thread. They come along with three PP material bottle neck adapters in 32, 38 and 40 mm diameters. For other bottle neck diameters, use 32 mm adapter (cat. No. 1.525.GL32) nested with any Calibrex™ 520 adapters.



⑤ Calibrex™ 520 have a 32 mm base thread. They come along with three PP material bottle neck adapters in 28, 40 and 45 mm diameters. For other bottle neck diameters, simply order the appropriate adapter size.

Type	Ext. Ø of bottle neck	Cat. No.
<b>Adapters for Calibrex™ 525/ 530</b>		
Threaded, PP	32 mm	1.525.GL32
Threaded, PP	38 mm	1.525.GL38
Threaded, PP	40 mm	1.525.GL40
<b>Adapters for Calibrex™ 520 / 521</b>		
Threaded, PP	22, 25, 28, 30, 34, 36, 38, 40, 45 mm	GLP + Ø
Threaded, PTFE	36, 38, 40, 45 mm	GLT + Ø
Tapered, PP	18.8, 24, 29.2, 45 mm	NSP + Ø
Tapered, PTFE	18.8, 24, 29.2 mm	NST + Ø

# Microdispenser and dispenser chemical resistance chart



Chemicals A - H	Acura 865	Acurex 501	Calibrex		
			520	525	530
Acetaldehyde (Ethanal)	C/2	A	A	A	A
Acetic acid 96%	B/2	A	A	A	B/2
Acetic acid 100% (Glacial)	B/2/3	A	A	B/4	B/2/4
Acetone (Propanone)	C/2/3	A	B/4	B/4	B/4
Acetonitrile (MECN)	B/2	A	A	B/4	B/4
Amino acids	B/1/4	A	A	C/1	A
Ammonium hydroxide (amonia)	C/2	A	A	B/4	B/4
Amyl alcohol (Pentanol)	A	A	A	A	A
Aniline	B/2	A	A	A	A
Ascorbic acid	B/1	A	A	C/1	A
Benzaldehyde	C/2	A	A	A	A
Benzene	C/3	A	B/4	B/4	B/4
Boric acid 10%	B/1/4	A	A	B/1	A
Bromine	B/2/3	B/2	B/2	C/4	C/2/4
Butanol	B/2/3	A	A	A	A
Butanone (MEK)	C/2	A	B/4	B/4	B/4
Butyl acetate	C/2	A	A	B/4	B/4
N-Butylamine	C/2/4	B/4	B/4	B/4	B/4
Calcium chloride	B/1/4	B/1	A	C/1	A
Calcium hydroxide	B/1/4	B/1	B/1	C/1	B/1
Carbon disulfide	B/2/3/4	A	A	B/4	B/4
Carbon tetrachloride	C/3	A	A	B/4	B/4
Chlorine dioxide	C/2/4	B/2/4	B/2/4	B/4	B/2/4
Chlorobenzene	B/2	A	A	B/4	B/4
Chlorobutane	B/4	A	A	B/4	B/4
Chloroethanol	B/2	A	A	B/4	B/4
Chloroform	C/2/4	A	B/4	B/4	B/4
Chlorosulfuric acid 100%	C/4	B/2/3	B/3	B/3/4	B/3/4
Chromic acid 100%	B/4	B/2/3	B/3	B/3/4	B/3/4
Citric acid	A/1	A	A	B/1	A
Cyanoacrylate	C/1/2/4	C/1	C/1	C/1	C/1
Cyclohexane	B/2/3	A	A	B/4	B/4
Cyclohexanone	C/2	A	A	B/4	B/4
1,4-Dioxane (Diethylene dioxide)	C/2	A	A	B/4	B/4
Dichlorobenzene	B/4	A	A	A	A
Dichloroethane (DCE)	B/4	B/4	B/4	A	A
Diesel oil (Heating oil)	B/3	A	A	A	A
Diethylene glycol	B/4	A	A	A	A
Diethylether	C/2	A	A	B/4	B/4
Dimethyl sulfoxide (DMSO)	B/1/2/4	A	A	B/1/4	B/4
Dimethylformamide (DMF)	C/2/4	A	B/4	B/4	B/4
Ethanol	B/2/4	A	A	A	A
Ether	C/2/3	A	B/4	B/4	B/4
Ethyl acetate	C/2/3/4	A	A	B/4	B/4
Ethylenediamine	C/2	A	A	A	A
Ethylene glycol	B/4	A	A	A	A
Formaldehyde (Formalin)	A	A	A	A	A
Formamide	B/2/4	A	A	A	A
Formic acid	C/2/4	A	A	A	A
Gamma-butyrolactone	C/2/4	A	A	A	A
Gasoline	C/3	A	A	B/4	B/4
Glycerin <40%	A	A	A	A	A
Heptane	B/3	A	A	A	A
Hexane	B/3	A	A	A	A
Hydrochloric acid 20%	C/4	B/2/3	A	A	A
Hydrochloric acid 37% (HCl)	C/4	B/2/3	A	B/3	B/3
Hydrofluoric acid (HF)	C/2/4	C/5	C/5	C/5	C/5
Hydrogen peroxide	B/3/4	A	A	A	B/2



Chemicals I - Z	Acura 865	Acurex 501	Calibrex		
			520	525	530
Iodine	B/1/2/3/4	A	A	C/1	B/1
Iodine bromide / chloride	C/2/4	C/2/4	C/2/4	C/4	C/2/4
Isooctane	B/3	A	A	A	A
Isopropanol	A	A	A	A	A
Isopropylamine	B/2/4	A	A	B/4	B/4
Lactic acid	C/1/4	A	A	C/1	A
2-Methoxyethanol	B/2/4	A	A	A	A
Methanol	C/2/4	A	A	A	A
Methyl chloride (Chloromethane)	C/3/4	A	A	B/4	B/4
Methyl methacrylate (MMA)	C/2/4	A	A	B/4	B/4
Methyl propyl ketone (2-Pentanone)	C/2/3/4	B/4	B/4	A	A
Methylene chloride (Dichloromethane) (DCM)	C/3/4	A	B/2/4	B/4	B/2/4
Nitric acid 100%	B/2/4	B/2/3	B/3	C/3/4	C/2/3/4
Nitric acid dil. <30%	B/2/4	A	A	B/4	B/4
Nitro-hydrochloric acid (Aqua regia)	C/4	B/2/3	B/3	B/4	B/2/4
N-methyl-2-pyrrolidone (NMP)	B/4	A	A	A	A
Octane	B/3	A	A	A	A
Octanol	A	A	A	A	A
Oil, mineral (engine oil)	A	A	A	A	A
Oil, vegetable, animal	B/2	A	A	B/4	B/4
Oil of turpentine	B/2	A	A	B/4	B/4
Oxalic acid	B/1/4	A	A	C/1	A
Pentane	B/3/4	B/4	B/4	B/4	B/4
Perchloric acid 100%	B/4	B/2/3	B/3	B/4	B/4
Perchloric acid diluted	B/4	A	A	A	A
Petroleum	B/3	A	A	B/4	B/4
Petroleum ether / spirit	C/3	A	A	B/4	B/4
Phenol	B/2/3/4	A	A	A	A
Phenylhydrazine	B/1/4	A	A	B/1/4	B/4
Phosphoric acid 85%	B/3/4	A	A	A	A
Potassium chloride	C/1/4	B/1	A	C/1	A
Potassium dichromate	B/1/2	A	A	C/1	B/1
Potassium hydroxide	B/1/2	B/1	B/1	C/1	A
Potassium iodide	B/1/4	A	A	C/1	A
Potassium permanganate	C/1/2/4	A	A	C/1	B/1
Propionic acid (Propanoic acid)	B/4	A	A	A	A
Propylene glycol (Propane-1,2-diol)	A	A	A	A	A
Picric acid (Trinitrophenol)	B/2/4	A	A	B/4	B/4
Pyridine	C/2/4	B/4	B/4	B/4	B/4
Scintillation fluid	---	A	A	A	A
Silver nitrate	C/1	A	B/1	C/1	A
Sodium acetate	C/1/2	A	A	C/1	A
Sodium chloride (Kitchen salt)	B/1/4	B/1	A	C/1	A
Sodium hydroxide 30%	C/1/2	B/1	B/1	C/1	A
Sodium hypochlorite (Javel water)	C/1/2/4	A	A	C/1	B/4
Sodium thiosulfate	B/1/4	A	A	C/1	A
Sulfonitric acid 100%	B/2/4	B/2/3	B/2/3	B/3/4	B/2/3/4
Sulfuric acid 98%	B/3/4	B/2/3	B/2	B/4	B/2/4
Tetrachloroethylene	B/2/4	B/4	B/4	B/4	B/4
Tetrahydrofuran (THF)	C/2/4	B/2/4	B/2/4	B/4	B/2/4
Toluene	C/2/3/4	A	B/4	B/4	B/4
Trichloroethylene	C/3	B/4	B/4	B/4	B/4
Trichloroacetic acid	C/1/2/4	A	A	B/1/4	B/4
Trichloroethane	C/3	B/4	B/4	B/4	B/4
Trichloromethane (Chloroform)	B/2/4	A	B/4	B/4	B/4
Triethylene glycol	B/2/4	A	A	A	A
Trifluoroacetic acid (TFA)	B/2/4	B/3	B/3	B/4	B/4
Xylene	C/2/3/4	A	B/4	B/4	B/2/4

## Compatibility statement

A = Good resistance B = Acceptable with limitations C = Not recommended

## Technical risks

- 1 = Possible crystallisation, valve or plunger blockage. Scratches on plunger coating if plunger/barrel dried and stick together.
- 2 = Swell of plunger coating, possible peeling. Acura® 865: chemical degradation of O-ring.
- 3 = Release of acid vapours (risk increases with concentration). Do not leave dispenser on bottle.  
Acura® 865: limited dosing cycles, possible plunger blockage and/or corrosion.
- 4 = Damage, softening or discoloration of external parts through vapours. Do not leave dispenser on bottle.  
Acura® 865: vapours may damage internal and external parts of upper assembly.
- 5 = Chemical degradation of glass parts (plunger/barrel).

## Extended chemical lists



Acura® 865

Calibrex™ 520/521

Acurex™ 501



Calibrex™ 525/530



From the basic unit to the corrosion-resistant model, the laboratory dedicated syringe line offers precision instruments you can trust. Intended for safe and reliable liquid distribution, the selection of pistol-grip and two-ring instruments comes in a wide volume range. One-year warranty.

## The Dosys™ syringes

### Product advantages

- Optimal hand balance and ergonomics
- Fast and reliable volume setting
- Excellent reproducibility
- Plunger tightness without O-ring
- High chemical resistance
- Fully autoclavable at 121°C / 250°F



162  
163  
164



172  
173  
174

Two-ring handle

Pistol-grip handle

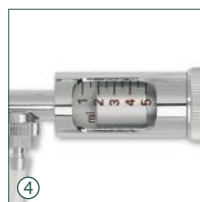


### Simple, natural movements ①②

Both pistol-grip and two-ring handles fit any hand in a comfortable way. Activation performed with limited effort for efficient work even during long dispensing series.

### Syringe stand

Stand holds syringe in ready-to-fetch position. Easy-to-clean material. Autoclavable (Cat. No. 320.170).



### Volume selection - Reliable reproducibility ③

Volume is set within seconds. It will not vary while activating the syringe, thanks to the safety-locking nut on the micrometric screw. Dose-by-dose reproducibility (CV) is excellent, as witnessed by performance figures.

### Plunger tightness without O-ring ④

Smooth plunger travel and tightness achieved through high-precision stainless steel plunger and ground glass barrel. No O-ring to mess with or replace.



### Glass protection ⑤

Interchangeable glass barrel is protected by a PVC sleeve (not autoclavable) to prevent breakage.

### Few parts assembly - Low maintenance ⑥

The automatic syringes are made of only six main parts, easy to disassemble. Fast access to all elements allows rapid and efficient cleaning. Spares are available at reasonable cost.

## Dosys™ laboratory syringes – Unlimited applications



Dose-by-dose  
distribution



Dispensing distribution



Sterile work



Filtration at your  
nozzle tip



Aspiration with reverse  
modus valve



Animal injection

## Instrument descriptions and ordering information

Corrosion  
resistant

### Dosys™ *basic* syringes 162 / 172

- Fill-by-fill (automatic) through needle or cannula
- Supplied without valve system
- Luer Lock nozzle

Package includes syringe, PVC protection sleeve and operating instructions.



Volume	Division	Dosys 162 Cat. No.	Dosys 172 Cat. No.
0.1 – 1 mL	0.05 mL	162.0501	172.0501
0.3 – 2 mL	0.1 mL	162.0502	172.0502
0.5 – 5 mL	0.5 mL	162.0505	172.0505
1 – 10 mL	1.0 mL		172.0510

### Dosys™ *classic* syringes 163 / 173

- Self-refilling automatic
- Integrated valve system
- Luer Lock nozzle

Package includes syringe, one meter silicone feed tube, sinker, PVC protection sleeve, aspiration and vent cannulas, set of spares for valve, operating instructions.



Volume	Division	Dosys 163 Cat. No.	Dosys 173 Cat. No.
0.025 – 0.3 mL	0.025 mL	163.05003	173.05003
0.1 – 0.5 mL	0.1 mL	163.05005	173.05005
0.1 – 1 mL	0.05 mL	163.0501	173.0501
0.3 – 2 mL	0.1 mL	163.0502	173.0502
0.5 – 5 mL	0.5 mL	163.0505	173.0505
1 – 10 mL	1 mL	163.0510	173.0510
5 – 20 mL	1 mL		173.0520

### Dosys™ *premium* syringes 164 / 174

- Self-refilling automatic
- Detachable valve system
- Enhanced corrosion resistance
- Luer Lock nozzle

Package includes syringe, one meter silicone feed tube, sinker, PVC protection sleeve, aspiration, vent and dosing cannulas, set of spares for valve, operating instructions.



Volume	Division	Dosys 164 Cat. No.	Dosys 174 Cat. No.
0.1 – 1 mL	0.05 mL	164.0501	174.0501
0.3 – 2 mL	0.1 mL	164.0502	174.0502
0.5 – 5 mL	0.5 mL	164.0505	174.0505
1 – 10 mL	1.0 mL	164.0510	174.0510

## Performance all models

Volume	Imprecision (CV%)		
	Min. vol.	Mid. vol.	Max. vol.
0.025 – 0.3 mL	< 1.8% <sup>1)</sup>	< 1.2%	< 0.5%
0.1 – 0.5 mL	< 1.2%	< 0.9%	< 0.4%
0.1 – 1 mL	< 0.7%	< 0.6%	< 0.4%
0.3 – 2 mL	< 0.6%	< 0.5%	< 0.4%
0.5 – 5 mL	< 0.5%	< 0.4%	< 0.2%
1 – 10 mL	< 0.5%	< 0.4%	< 0.2%
5 – 20 mL	< 0.5%	< 0.4%	< 0.4%

Tests performed with bidest. water, using stainless steel cannula (1.2x50 mm), at constant working speed. <sup>1)</sup> Measured at 0.075 mL

## Liquid path materials (for chemical resistance)

Parts	Basic / classic models	Premium models
Feed tubing	Silicone	Silicone
Barrel	Borosilicate glass	Borosilicate glass
Washer, barrel	FPM	FPM
Plunger	Stainless steel DIN 304	Stainless steel DIN 316L
Valve system	Ni-Cr Brass	Stainless steel DIN 316L
Washer, valve	PTFE	PTFE
Spring and balls, valve	Stainless steel, DIN 304	Stainless steel, DIN 304
Sinker, feed cannula	Ni-Cr Brass	Ni-Cr Brass



## Accessories for self-refilling syringes



### Alternative feed sources ①②

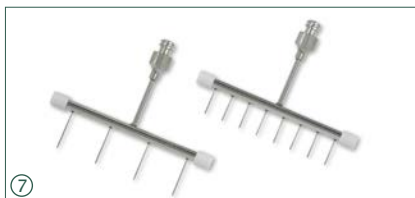
Optional vial holder conversion set and reagent reservoirs for additional liquid feeding possibilities.

Description	Packaging	Cat. No.
Vial holder conversion set for 163 and 173 models (except 20 mL), without vial	1 / pk	1.187.1C
PP bottle, 60 mL	1 / pk	1.187.060*
PP bottle, 125 mL	1 / pk	1.187.150*
PP bottle, 250 mL	1 / pk	1.187.250*

\*Use with Rotlauf inlet valve (Cat. No. 187.613) only, to be ordered separately.

### Multiple dispensing manifolds ⑦

For convenient distribution in 24- and 96-well plates. Tight-fitting Luer and Luer Lock syringe nozzles. Stainless steel with PTFE stoppers, autoclavable.



Description	Packaging	Cat. No.
4-channel manifold, 20 mm spacing	1 / pk	1.170.054
8-channel manifold, 9 mm spacing	1 / pk	1.170.058

### Dispensing needles & cannulas

Luer Lock, stainless steel, autoclavable.

Size (ø x L)	Packaging	Cat. No.
<b>Lab cannulas, blunt end</b>		
0.8 x 40 mm	12 / pk	370.0840
1.2 x 50 mm	1 / pk	370.1250
2.2 x 100 mm	1 / pk	370.22100
2.2 x 150 mm	1 / pk	370.22150
<b>Superior quality needles, bevelled</b>		
1.2 x 10 mm	1 / pk	371.1210UN
1.6 x 20 mm	1 / pk	371.1620UN
2.0 x 30 mm	1 / pk	371.2030UN



### Enhanced tightness set ③

The special clear glass barrel / X-ring fitted plunger enhance tightness when demanded by application (ex. filtration, aspiration, etc.).

Description	Packaging	Cat. No.
Set includes one each plunger, X-ring, 5 mL barrel and grease	1 / pk	1.170.205
Spare barrel for tightness set, 5 mL	6 / pk	0187.05T

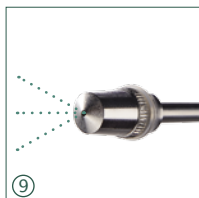
### Anti-Blocking Factor (ABF™) premium anti-corrosive lubricant ④

Reduces instrument wear, provides efficient metal protection

Description	Packaging	Cat. No.
Lubricant spray, 70 mL	1 / pk	1.170.705
	6 / pk	1.170.906
	12 / pk	1.170.912

### Injection needles ⑧

Beveled, high-quality needles, stainless steel, autoclavable. 12 / pack.



ø x L, mm	Cat. No.	ø x L, mm	Cat. No.
0.7 x 13	371.0713	1.4 x 20	371.1420
0.8 x 10	371.0810	1.4 x 35	371.1435
0.8 x 25	371.0825	1.5 x 150	371.15150
0.8 x 30	371.0830	1.6 x 20	371.1620
0.8 x 40	371.0840	1.6 x 25	371.1625
1.0 x 10	371.1010	1.6 x 30	371.1630
1.0 x 20	371.1020	1.6 x 100	371.16100
1.0 x 30	371.1030	1.8 x 10	371.1810
1.0 x 40	371.1040	1.8 x 20	371.1820
1.2 x 10	371.1210	1.8 x 30	371.1830
1.2 x 20	371.1220	2.0 x 30	371.2030
1.2 x 35	371.1235	2.0 x 40	371.2040
1.2 x 50	371.1250	2.0 x 50	371.2050

Additional sizes available

### Cannula with sprayer nozzle ⑨

Luer Lock, stainless steel, autoclavable.

Size Ø x L, mm	Packaging	Cat. No.
3.0 x 180 mm	1 / pk	370.30180
3.0 x 500 mm	1 / pk	370.30500



### Aspiration valve ⑤⑥

Reverse modus valve set for liquid aspiration (ex. waste collection in separate container). Vented waste collector cap and enhanced tightness set recommended.

Description	Packaging	Cat. No.
Reverse modus aspiration valve unit for 164 / 174 models	1 / pk	1.170.952
Screw cap ø 45 mm, with tubing connection and filtered air outlet	1 / pk	1.170.945

Description	Packaging	Cat. No.
Lubricant spray, refill bottle, 500 mL	1 / pk	1.170.755
	6 / pk	1.170.956
	12 / pk	1.170.962

### Cleaning brushes ⑩

Heavy-duty nylon brushes with tufted end and plastic handle for barrel cleaning.



Description	Packaging	Cat. No.
For 0.3, 0.5, 1 mL barrels	6 / pk	1.170.301
For 1, 2, 5 mL barrels	6 / pk	1.170.305
For 5, 10, 20 mL barrels	3 / pk	1.170.320
Set of 6 nylon brushes, 2 each	6 / pk	1.170.300

### Drenchers ⑪

For safe animal mouth- and nose-feeding. Stainless steel, autoclavable.

Size (ø x L)	Packaging	Cat. No.
<b>Drenchers, straight</b>		
0.9 x 25 mm	3 / pk	376.0925S
1.2 x 51 mm	3 / pk	376.1251S
1.6 x 102 mm	2 / pk	376.16102S
3.0 x 203 mm	2 / pk	376.30203S
<b>Drenchers, bent</b>		
0.9 x 25 mm	3 / pk	376.0925B
1.2 x 51 mm	3 / pk	376.1251B
1.6 x 102 mm	2 / pk	376.16102B
3.0 x 203 mm	2 / pk	376.30203B

## Spare parts for self-refilling syringes



## Ground glass barrels ①

Description	Packaging	Cat. No.
Barrel, syringe 0.3 mL	6 / pk	0187.003
Barrel, syringe 0.5 mL	6 / pk	0187.005
Barrel, syringe 1 mL	6 / pk	0187.01
Barrel, syringe 2 mL	6 / pk	0187.02
Barrel, syringe 5 mL	6 / pk	0187.05
Barrel, syringe 10 mL	6 / pk	0187.10
Barrel, syringe 20 mL	3 / pk	0187.20

## Spare bags ③

Description	Packaging	Cat. No.
Kit for valve, syringe 0.3 mL	1 bag	1.187.72003
Kit for valve, syringe 0.5 mL	1 bag	1.187.72005
Kit for valve, syringe 1 mL	1 bag	1.187.7201
Kit for valve, syringe 2 mL	1 bag	1.187.7202
Kit for valve, syringe 5 mL	1 bag	1.187.7205
Kit for valve, syringe 10 mL	1 bag	1.187.7210
Kit for valve, syringe 20 mL	1 bag	1.187.7220

Includes springs, balls, washer for valve and barrel washer.

## Vent and feed cannulas ⑤

Description	Packaging	Cat. No.
<b>Short vent cannulas</b>		
Plastic / SS, syringes 0.3 to 5 mL	1 / pk	187.933
Chrome plated, syringe 10 mL	1 / pk	187.591
Chrome plated, syringe 20 mL	1 / pk	187.593

**Long feed cannulas**

Chrome plated, syringes 0.3 to 10 mL	1 / pk	187.592
Chrome plated, syringe 20 mL	1 / pk	187.594

## PVC protection sleeves ②

Description	Packaging	Cat. No.
Sleeve, 0.3, 0.5 mL barrels	6 / pk	1.170.4005
Sleeve, 1 mL barrels	6 / pk	1.170.401
Sleeve, 2 mL barrels	6 / pk	1.170.402
Sleeve, 5 mL barrels	6 / pk	1.170.405
Sleeve, 10 mL barrels	6 / pk	1.170.410
Sleeve, 20 mL barrels	3 / pk	1.170.420

## Feed tubing (medical quality silicone) ④

Description	Packaging	Cat. No.
Tube, syringes 0.3 to 10 mL, cut	1 m / pk	187.705
Tube, syringes 0.3 to 10 mL, cut	3x 1 m / pk	187.905
Tube, syringes 0.3 to 10 mL, uncut	10 m / pk	187.910
Tube, syringes 0.3 to 10 mL, cut	by the meter	187.710
Tube, syringe 20 mL, cut	1 m / pk	187.707

## Other spare parts

Refer to separate list for exhaustive selection.

## The Dosys™ all-glass syringes

The reusable borosilicate glass syringes offer superior chemical and heat-shock resistance. A precious, low-cost alternative to disposable plastic syringes, complementing the self-refilling models in many applications.

## Product advantages

- Precision-machined plunger and barrel
- Excellent fitting and liquid tightness (not gas tight)
- Permanent, high-visibility graduations
- Autoclavable at 121°C / 250°F

## Ordering information

Volume	Division	Packaging	Glass Luer nozzle Cat. No.	Metal Luer Lock nozzle Cat. No.
0.1 - 1 mL	0.05 mL	3 / pk	155.0301	155.0501
0.5 - 2 mL	0.1 mL	3 / pk		155.0502
0.2 - 5 mL	0.2 mL	3 / pk	155.0305	155.0505
1 - 10 mL	0.2 mL	3 / pk	155.0310	155.0510
1 - 20 mL	1 mL	2 / pk	155.0320	155.0520
1 - 30 mL	2 mL	2 / pk	155.0330	155.0530
1 - 50 mL	2 mL	1 / pk		155.0550
10 - 100 mL	10 mL	1 / pk	155.03100	155.05100
10 - 150 mL	10 mL	1 / pk		155.05150
10 - 200 mL	10 mL	1 / pk		155.05200
10 - 250 mL	10 mL	1 / pk		155.05250

155

1 to 250 mL



# Profiller™*electro* electronic pipette controller



Pipette controller fitting any hand in a very comfortable way. Shape is ideal for working with glass or plastic pipettes within laminar flow or microbiological safety cabinet. A powerful, yet quiet motor and a switch to set both aspiration and dispensing speeds enable maximal working efficiency even with large pipetting volumes. One-year warranty.

## The Profiller™ *electro* 446

### Product advantages

- Powerful pump – fills 25 mL in 3 seconds
- Simple, fast operation
- Comfortable finger triggers
- Low battery light
- NiMH battery rechargeable during use
- Interchangeable protection membrane filter
- Stand suitable for bench or wall mounting

### Finger triggers ①

Suction and dispensing are controlled through two ergonomically positioned finger triggers. They provide a comfortable grip with minimum activation effort.



### Variable speed ②

Switch enables selection of fast or slow aspiration and dispensing (with blow-out). Fast speed filling up to 25 mL in under 3 seconds. Gravity dispense mode is designed for use with 'To Deliver' (TD) pipettes.

### Ordering information – Instrument

Supplied with power supply, two spare hydrophobic filters (0.45 µm and 0.2 µm), bench / wall stand and instruction manual.

Profiller™ <i>electro</i> 446	Packaging	Cat. No.
With Europe style plug	1 / pk	446.100E
With UK style plug	1 / pk	446.100G
With USA/Japan style plug	1 / pk	446.100U

## 446

Pipettes  
up to 100 mL



### Convenient stand

Suitable for bench or wall mounting, stand houses Profiller™ *electro* with or without a pipette in place.



### Battery charge ③

Instrument plug enables charging battery either in storage position or during use.



### Ordering information – Accessories

Description	Packaging	Cat. No.
Spare stand	1 / pk	320.446
Spare 1.2V NiMH battery	2 / pk	900.916
Power supply, Europe style plug	1 / pk	900.946E
Power supply, UK style plug	1 / pk	900.946G
Power supply, USA-Japan style plug	1 / pk	900.946U

Description	Packaging	Cat. No.
Membrane filter, 0.45µm	5 / pk	322.435
Membrane filter, 0.2µm	5 / pk	322.400
Silicone pipette holder	1 / pk	1.435.01
Nose cone – white	3 / pk	1.435.02
Alternative nose cones pink, violet, green (1 each)	3 / pk	1.435.03

Robust and easy to use, this model offers ergonomic shape and light weight. It provides smooth control in both, aspirating and dispensing, using glass or plastic pipettes of volume up to 100 mL. One-year warranty.

## 435

Pipettes  
up to 100 mL

### Profiller™ manual 435

#### Product advantages

- Large capacity bulb
- Soft action lever button
- Efficient blow-out system
- PTFE protection membrane filter
- Maintenance free
- Alternative colour-coded nose cones

#### Squeezable bulb ①

Simply squeeze large capacity silicone bulb for efficient aspiration. If additional aspiration is needed, it can be squeezed even during pipetting.



#### Precise control ②

Thumb lever button for left and right-handed users to easily control both aspiration and dispensing speeds.

#### Liquid blow-out ③

Press large button to expel residual liquid when using blow-out type pipettes.

### Ordering information Profiller™ 435

Description	Packaging	Cat. No.
Profiller™ manual 435, egg style grey bulb	1 / pk	435.100

#### Protection filter ④

Interchangeable hydrophobic membrane filter guarantees effective protection against airborne contamination during aspiration and dispensing.



#### Colour coding cones ⑤

Nose cone can be changed for individual, laboratory or department identification. Choose among regular white or a bunch of three colours.

#### Pipette holder

Conical shape of silicone pipette holder tightly fits graduated glass or plastic pipettes. Autoclavable.

## The Profillette™ 406

### Product advantages

- One-hand operation
- Easy filling and dispensing
- Air inlet valve for fast distribution
- Colour coding per size
- Maintenance free



## 406

2 mL  
10 mL  
25 mL

### Ordering information Profillette™ 406

Volumes	Colours	Packaging	Cat. No.
2 mL	blue	1 / pk	406.002
10 mL	green	1 / pk	406.010
25 mL	red	1 / pk	406.025
2 / 10 / 25 mL	assorted	3 / pack	406.300

### Ordering information Accessories

Description	Packaging	Cat. No.
<b>Profillette™ 406</b>		
Spare silicone pipette holder	1 / pk	1.406.01
Replacement nose screw	1 / pk	1.406.02
<b>Profiller™ 435</b>		
Membrane filter, 0.45µm	5 / pk	322.435
Membrane filter, 0.2µm	5 / pk	322.400
Silicone pipette holder	1 / pk	1.435.01
Nose cone - white	3 / pk	1.435.02
Alternative nose cones - pink, violet, green (1 each)	3 / pk	1.435.03





A perfect match between micropipettes and tips guarantees trouble-free pipetting and reliable results. The Socorex Qualitips® are designed to fulfil above preconditions. The line is exclusively made from high grade, virgin, metal-free polypropylene. Precision injection moulding care for air-tight fit. Stringent quality procedures ensure lot by lot consistency. Various shapes in a range from 10 µL to 10 mL.

## The Qualitips® pipette tips from 10 µL to 10 mL

### Product advantages

- Wide selection, superior quality
- Lot-by-lot consistency
- Bulk or rack availability
- Compatibility with various pipette brands
- High-density filter prevents aerosol contamination
- DNase and RNase-free filter tips
- Pyrogen-free sterilized filter tips



Ask for free samples

## Ordering information - pipette tip selection

### Qualitips 10 µL

	Size
	31.0 mm
	31.0 mm
	42.3 mm
	45.6 mm
	70.9 mm

### Qualitips 20 µL

	Size
	51.0 mm
	69.0 mm

### Qualitips 100 µL

	Size
	54.1 mm
	69.0 mm

Description							Packaging		Cat. No.
Tip also fits	Capacity	Colour	Style	Filter	Sterilized		Unit	Quantity	
BT, EP, GL	10 µL	Natural	Ultra-micro	No	No		Bag	1000	309.0010B
BT, EP, GL	10 µL	Natural	Ultra-micro	No	No		Rack	10 x 96	309.0010R
BR, BT, EP, TF, GL	10 µL	Natural	Ultra-micro	Yes	Yes		Rack	10 x 96	309.0010FR
BR, BT, EP	10 µL	Natural	Micro	No	No		Bag	1000	302.0020B
BR, BT, EP	10 µL	Natural	Micro	No	No		Rack	10 x 96	302.0020R
BR, EP, TF	10 µL	Natural	Micro	Yes	Yes		Rack	10 x 100	302.0010FR
BR, EP, TF	10 µL	Natural	Micro	Yes	No		Bag	1000	302.0010AFB
BR, EP, TF	10 µL	Natural	Gel loading	No	No		Rack	4 x 204	302.0010GR

Description							Packaging		Cat. No.
Tip also fits	Capacity	Colour	Style	Filter	Sterilized		Unit	Quantity	
BR, BT, EP, TF, GL	20 µL	Natural	Regular	Yes	Yes		Bag, single wrapped	5 x 100	308.0020FS
BR, BT, EP, TF, GL	20 µL	Natural	Regular	Yes	Yes		Rack	10 x 96	308.0020FR
BR, BT, EP, TF, GL	20 µL	Natural	Gel loading	Yes	Yes		Rack	4 x 204	308.0020GFR

Description							Packaging		Cat. No.
Tip also fits	Capacity	Colour	Style	Filter	Sterilized		Unit	Quantity	
BR, BT, EP, TF, GL	100 µL	Natural	Regular	Yes	Yes		Rack	10 x 96	308.0100FR
BR, BT, EP, TF, GL	100 µL	Natural	Gel loading	Yes	Yes		Rack	4 x 204	308.0100GFR

## Qualitips 200 µL

Size	
49.4 mm	
49.4 mm	
51.1 mm	
49.7 mm	
49.7 mm	
49.0 mm	
69.0 mm	
90.9 mm	

## Qualitips 300 / 350 µL

Size	
58.8 mm	
58.8 mm	

## Qualitips 1000 µL

Size	
79.0 mm	
72.0 mm	
72.0 mm	
69.5 mm	
88.6 mm	

## Qualitips 2 / 5 / 10 mL

Size	
115.5 mm	
123.2 mm	
150.0 mm	

## Empty autoclaving boxes



Description	Tip also fits	Capacity	Colour	Style	Filter	Sterilized	Packaging Unit	Packaging Quantity	Cat. No.
BR, BT, EP, TF, GL		200 µL	Natural	Graduated	No	No	Bag	2 x 500	307.0200B
BR, BT, EP, TF, GL		200 µL	Yellow	Graduated	No	No	Bag	2 x 500	327.0200B
BR, BT, EP, TF, GL		200 µL	Yellow	Graduated	No	No	Rack <sup>1)</sup>	10 x 96	327.0200R
BR, BT, EP, TF, GL		200 µL	Natural	Regular	No	No	Bag	1000	308.0200B
BR, BT, EP, TF, GL		200 µL	Natural	Regular	No	No	Rack	10 x 96	308.0200R
BR, BT, EP, TF, GL		200 µL	Natural	Regular	No	No	Bag	2 x 500	309.0200B
BR, BT, EP, TF, GL		200 µL	Natural	Regular	No	No	Rack	10 x 96	309.0200R
BR, BT, EP, TF, GL		200 µL	Yellow	Regular	No	No	Bag	2 x 500	329.0200B
BR, BT, EP, TF, GL		200 µL	Yellow	Regular	No	No	Rack	10 x 96	329.0200R
BR, EP		200 µL	Yellow	Regular	No	No	Bag	2 x 500	328.0200B
BR, EP		200 µL	Yellow	Regular	No	No	Rack	10 x 96	328.0200R
BR, BT, EP, TF, GL		200 µL	Natural	Gel loading	No	No	Rack	4 x 204	308.0200GR
BR, BT, EP, TF, GL		200 µL	Natural	Extended	Yes	Yes	Bag, single wrapped	5 x 100	308.0200LFS
BR, BT, EP, TF, GL		200 µL	Natural	Extended	Yes	Yes	Rack	8 x 204	308.0200LFR

Description	Tip also fits	Capacity	Colour	Style	Filter	Sterilized	Packaging Unit	Packaging Quantity	Cat. No.
BR, BT, EP, GL		350 µL	Natural	Regular	No	No	Bag	1000	308.0350B
BR, BT, EP, GL		350 µL	Natural	Regular	No	No	Rack	10 x 96	308.0350R
BR, BT, EP, GL		300 µL	Natural	Regular	Yes	Yes	Rack	10 x 96	308.0300FR
BR, BT, EP, GL		300 µL	Natural	Regular	Yes	No	Bag	1000	308.0300AFB

Description	Tip also fits	Capacity	Colour	Style	Filter	Sterilized	Packaging Unit	Packaging Quantity	Cat. No.
BR, BT, EP, TF, GL		1000 µL	Natural	Graduated	No	No	Bag	4 x 250	307.1000B
BR, BT, EP, TF, GL		1000 µL	Natural	Graduated	No	No	Rack <sup>1)</sup>	10 x 60	307.1000R
BR, BT, EP, TF, GL		1000 µL	Natural	Regular	No	No	Bag	4 x 250	309.1000B
BR, BT, EP, TF, GL		1000 µL	Natural	Regular	No	No	Rack	8 x 60	309.1000R
BR, BT, EP, TF, GL		1000 µL	Blue	Regular	No	No	Bag	4 x 250	319.1000B
BR, BT, EP, TF, GL		1000 µL	Blue	Regular	No	No	Rack	8 x 60	319.1000R
BR, BT, EP, TF		1000 µL	Blue	Regular	No	No	Bag	4 x 250	318.1000B
BR, BT, EP, TF		1000 µL	Blue	Regular	No	No	Rack	8 x 60	318.1000R
BR, BT, EP, TF		1000 µL	Natural	Regular	Yes	Yes	Bag, single wrapped	5 x 100	309.1000FS
BR, BT, EP, TF		1000 µL	Natural	Regular	Yes	Yes	Rack	10 x 100	309.1000FR
BR, BT, EP, TF, GL		1000 µL	Natural	Regular	Yes	No	Bag	1000	309.1000AFB

Description	Tip also fits	Capacity	Colour	Style	Filter	Sterilized	Packaging Unit	Packaging Quantity	Cat. No.
E		2 mL	Natural	Regular	No	No	Bag	2 x 250	312.02
G		5 mL	Natural	Graduated	No	No	Bag	2 x 250	312.05B
G		5 mL	Natural	Graduated	No	No	Rack	2 x 50	312.05R
F		10 mL	Natural	Regular	No	No	Bag	3 x 100	312.10


Tip fitting: **BR** = Brand®, **BT** = Biohit®, **EP** = Eppendorf®, **FP** = FinnpiPETTE®, **GL** = Gilson®. Brand names belong to their respective owners.

Description	Fitting	Lid type	Packaging	Cat. No.
Empty box	10 µL tips #309.0010B	hinged	10 / pk	309.0010ER
Empty box	10 µL tips #302.0020B	cover	10 / pk	302.0020ER
Empty box	200 µL tips #328.0200B	cover	10 / pk	328.0200ER
Empty box	350 µL tips #308.0350B	cover	10 / pk	308.0350ER
Empty box	1000 µL tips #319.1000B	cover	8 / pk	319.1000ER
Empty box	10 mL tips #312.10	hinged	4 / pk	312.10ER

<sup>1)</sup> hinged lid

## Qualitips® compatibility chart

Chart below indicates optimal combination of Qualitips® and Socorex® pipette. Detailed compatibility with other pipette brands available on request. Please contact your local distributor or Socorex.

	Acura® manual and Acura® electro																Calibra® digital														
	815				825/826/925/926								835/935/936				855/955/956				822				832	852					
	up to 10 µL 10 Y / 15 / 20 µL 25 to 100 µL 120 to 200 µL 250 to 1000 µL				0.1 – 2 µL 0.5 – 10 µL (Y) 1 – 10 µL (Y) 2 – 20 µL 5 – 50 µL 10 – 100 µL 20 – 200 µL 100 – 1000 µL								0.2 – 2 mL 0.5 – 5 mL 1 – 10 mL				0.5 – 10 µL 5 – 50 µL 20 – 200 µL 40 – 350 µL				0.2 – 2 µL 1 – 10 µL (Y) 2 – 20 µL 10 – 100 µL 20 – 200 µL 100 – 1000 µL				0.2 – 2 mL 1 – 10 mL		1 – 10 µL 10 – 100 µL 20 – 200 µL				
	Microtips, 10 µL																														
	309.0010B + R	x				x	x									x			x <sup>2)</sup>	x <sup>2)</sup>							x				
	309.0010FR	x				x	x									x			x <sup>2)</sup>	x <sup>2)</sup>							x				
	302.0020B + R	x				x	x												x	x											
	302.0010FR + AFB	x <sup>3)</sup>					x												x	x											
	302.0010GR	x <sup>3)</sup>				x <sup>3)</sup>													x	x											
	Microtips, 20 µL																														
308.0020FS + FR		x					x	x	x <sup>1)</sup>	x <sup>1)</sup>					x <sup>1)</sup>							x	x <sup>1)</sup>					x <sup>1)</sup>			
308.0020GFR		x					x	x	x <sup>1)</sup>	x <sup>1)</sup>													x <sup>1)</sup>								
Microtips, 100 µL																															
308.0100FR			x							x	x						x							x	x <sup>1)</sup>			x	x <sup>1)</sup>		
308.0100GFR			x							x	x	x <sup>1)</sup>												x <sup>1)</sup>							
Microtips, 200 µL																															
307.0200B		x	x	x				x	x	x	x	x					x	x					x	x	x						
327.0200B + R		x	x	x				x	x	x	x	x					x	x					x	x	x						
308.0200B + R		x	x					x	x	x	x						x	x					x	x	x			x	x		
309.0200B + R		x	x	x				x	x	x	x	x					x	x					x	x	x			x	x		
329.0200B + R		x	x	x				x	x	x	x	x					x	x					x	x	x			x	x		
328.0200B + R		x						x	x														x	x	x			x	x		
308.0200GR		x	x					x	x	x	x												x	x	x						
308.0200LFS + LFR				x							x														x						
Microtips, 300 / 350 µL																															
308.0350B + R				x						x	x	x						x	x					x	x	x			x	x	
308.0300FR + AFB				x							x							x	x						x					x	
Microtips, 1000 µL																															
307.1000B + R				x								x													x						
309.1000B + R				x								x													x						
319.1000B + R				x								x													x						
318.1000B + R				x								x													x						
309.1000FR + FS + AFB				x								x													x						
Macrotips																															
312.02 (2 mL)														x													x				
312.05B + R (5 mL)															x																
312.10 (10 mL)																x												x			

<sup>1)</sup> Only to max. volume of the tip

<sup>2)</sup> As of serial number 09091001

<sup>3)</sup> > 2 µL only



**Glass Pasteur pipette ①②**

Standard 2 mL models fitting Acura® and Calibra® 2 and 5 mL macropipettes with their respective adapters. Useful alternative to macrotips, for instance when handling PP affecting reagents. Model and size selection fit most lab requirements.

**Pasteur pipette adapters ③**

Dedicated PVDF adapters with two internal O-rings tightly fitting glass Pasteur pipette (ext Ø 6.5 – 7.2 mm), without excluding the use of regular PP tips.

**Ordering information - Pasteur pipettes**

Material	Volume	Dimension (lxØ mm)	Packaging	Cat. No.
Glass	2 mL	150 x 7	250/ pk	313.02.150
		230 x 7	250/ pk	313.02.230
Glass with cotton plug	2 mL	150 x 7	250/ pk	313.02.150C
		230 x 7	250/ pk	313.02.230C

**Pasteur adapter**

Fits macropipette	Packaging	Cat. No.
Acura® manual 835, 2 mL	1/ pk	1.835.631
Acura® electro 936, 2 mL		
Calibra® digital 832, 2 mL		
Acura® manual 835, 5 mL	1/ pk	1.835.633
Acura® electro 936, 5 mL		



**Straw tips ④**

Fitting the Acura® 810 dilution pipette, the long and thin shape straw tips allow pick-up of particle containing liquids in Stomacher® bags and deep, narrow reservoirs without blocking. Supplied sterilized in re-sealable bag.

**Nozzle filters for pipettes ⑤⑥**

Protection against liquid overflow or aerosol contamination. Filters are interchangeable, non-sterile, non autoclavable.

**Ordering information - Straw tips and nozzle filters**

Description	Fits	Material	Size (lxØ mm)	Packaging	Cat. No.
Straw tips, 1.1 mL	Acura® manual 810	PP, sterilized	190 x 4	40x 25/ pk	313.1119.40
Nozzle filter	Acura® manual 810	PE	6.3 x 2.5	100/ pack	322.810
Nozzle filter	Calibra® digital 832, 2 mL	Cellulose	22 x 7	250/ bag	322.02
Nozzle filter	Acura® manual 835, 2 and 5 mL	PP fibre	20 x 7.5	250/ bag	322.05
	Acura® electro 935, 5 mL				
Nozzle filter	Calibra® digital 832, 10 mL	PP fibre	30 x 10.5	100/ bag	322.10
	Acura® electro 935, 10 mL				





### All-purpose reagent reservoirs ①②

Particularly well suited for single and multichannel pipetting. V-shape bottom enables aspiration until last reagent drops. Made of PP, autoclavable, re-usable.

### Multichannel reagent reservoirs ③

8 and 12 channel reservoirs provide ideal solutions for many applications. Sterilized PS material, single wrapped.

### Ordering information - Reagent reservoirs

Description	Dimensions	Volume	Colour	Style	Lid	Materials	Sterilized	Packaging	Cat. No.
Reservoir	58x132x25 mm	70 mL	Natural	V-shaped	No	PP	No	20/ pack	330.01
Reservoir	83x121x34 mm	125 mL	Natural	V-shaped	Yes, hinged	PP	No	20/ pack	330.01L
Reservoir	83x126x13 mm	48 mL	White	8-channel	No	PS	Yes	10x 1/ pack	330.08.9
Reservoir	83x126x13 mm	48 mL	White	12-channel	No	PS	Yes	10x 1/ pack	330.12.9



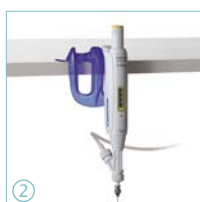
Properly storing micropipettes prevents damages and extends their life span. Socorex® offers a choice of stands adapted to any laboratory configuration.

## Shelf pipette holder 332

- 2-position
- Fitting micro, macro and multichannel pipettes



332



### Holder for two instruments ①②

The attractive design accommodates all Calibra® and Acura® instruments, including microdispenser pipettes Acura® 865. A self-adhesive strip supplied ensures lasting attachment on any clean surface. Made of polycarbonate material.

## Ordering information

Colour	Packaging	Cat. No.
<b>Shelf pipette holder 332</b>		
Transparent blue	1 / pk	320.332
Transparent blue	4 / pk	320.332.4
<b>3 pipette work station 340</b>		
Light grey	1 / pk	320.340

340

## Static work station 340

- 3-position
- Fitting micro, macro and/or multichannel Socorex pipettes
- Easy reach of each instrument



### Extended compatibility ③④

Work station 340 also accommodates the dilution pipette Acura® 810 and the microdispenser pipettes Acura® 865. Heavy bottom plate and anti-slip pads guarantee high stability. Made of polyamide material.

The two universal micropipette stands fit all brands, ensuring their proper storage at any time. Anti-slip pads guarantee bench stability. Easy to clean.

336



#### Twister™ universal 336

- 6-position
- 360° soft rotation
- Instruments easy to fetch
- Concept fits pipettes of most brands
- Interchangeable discs
- Seven translucent colours



#### In-line™ universal 337

- 7-position
- Holds single channel pipettes of most brands
- Space saving pipette stand
- Sturdy polyamide material
- Five attractive pastel colours



337



#### Universal storage solution ①

No more micropipettes laying on the bench thanks to universal stands. They accommodate Socorex® and other brand micropipettes. Simple disassembling and cleaning.

#### Smooth rotation ②

Stand includes mechanism enabling soft rotation with the fingertip. For quick selection and picking of the desired micropipette.



#### In-line universality ③ ④

One fits all; the stand holds new and old generations of Socorex® and other brand micropipettes.

#### Ordering information

Colour	Packaging	Cat. No.
<b>Twister™ universal 336</b>		
Rubin red	1 / pk	320.336R
Topaz orange	1 / pk	320.336O
Citrine yellow	1 / pk	320.336Y
Emerald green	1 / pk	320.336G
Sapphire blue	1 / pk	320.336B
Quartz grey	1 / pk	320.336Q
Diamond white	1 / pk	320.336W
<b>In-line™ universal 337</b>		
Light grey	1 / pk	320.337G
Pastel rose	1 / pk	320.337R
Ice blue	1 / pk	320.337B
Mint green	1 / pk	320.337M
Vanilla yellow	1 / pk	320.337Y

# Socorex Service Center service programme

Socorex instruments are built to last. In order to guarantee trouble free usage over time, a minimum maintenance and regular calibration are strongly recommended. From rapid check-up or basic repair to GLP requirements, the Socorex Service Center - in its ultra-modern facilities - provides fast and reliable service and calibration, based on a long term experience in manufacturing precision liquid handling instruments.



## Advantages

- Know-how and high competence
- All brand service for pipettes and dispensers
- Broad programme
- Controls according to ISO 8655 and ISO 17025 standards
- SAS accredited QC laboratory



## Broad calibration programme

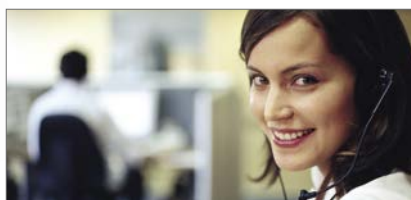
Whatever the maintenance level needed for micropipettes and dispensers, Socorex has the appropriate answer, including customised service plans when required.

## Efficient handling

The lead time for instruments received at Socorex is three to five working day, or 48 hours using our "Express service".

## Service Center on the web

For more details about our service programme, check: [www.socorex.com](http://www.socorex.com)



## Personalised technical support

Highly qualified personnel with a broad product knowledge is at disposal for all technical matters. The team also provides professional answers and solutions about handling, maintenance and control procedures.

## SCS accredited laboratory

Accredited by SAS (Swiss Accreditation Services), the Socorex QC laboratory performs calibrations in full compliance with ISO 17025 and delivers control certificates recognized internationally by ILAC members.

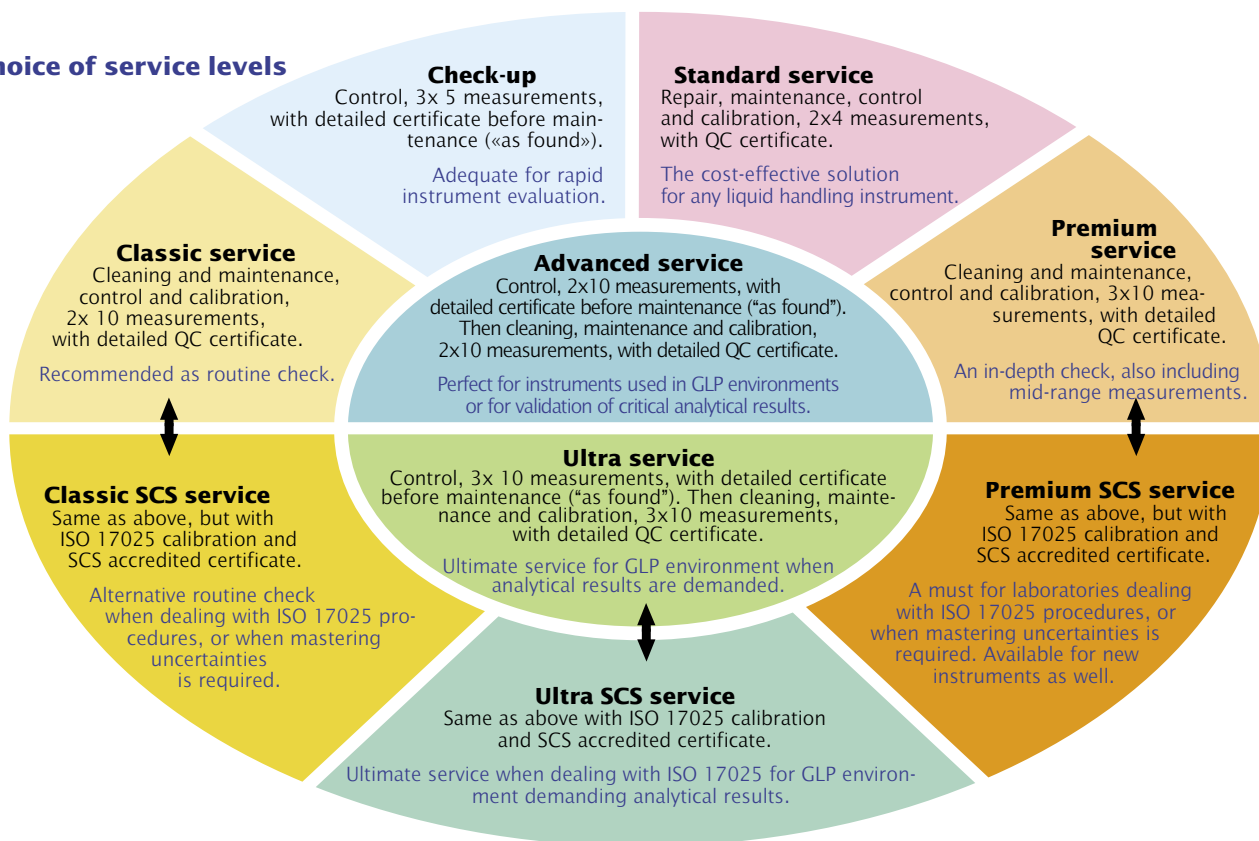
## Examples of ILAC members from signatory countries

Country	Organisation
Australia	NATA
Austria	BMWA
Belgium	BELAC
Brazil	CGCRE / INMETRO
Canada	SCC-CLAS
China	CNAS
China HK	HKAS
Croatia	HAA
Czech Republic	CAI
Denmark	DANAK
Finland	FINAS
France	COFRAC
Germany	DAkkS
Hungary	NAT
India	NABL
Indonesia	KAN
Ireland	INAB
Italy	SIT
Japan	IA-JAPAN
Netherlands	RvA
Norway	NA
Poland	PCA
Portugal	IPAC
South Africa	SANAS
Slovenia	SA
Spain	ENAC
Sweden	SWEDAC
Switzerland	SAS
Turkey	TURKAK
United Kingdom	UKAS
USA	NVLAP

Complete list and details under [www.ILAC.org](http://www.ILAC.org)



## A choice of service levels



## Service programme

Service levels		Maintenance and control per ISO 8655						Accredited calibration per ISO 17025			
		Check-up	Standard	Classic	Premium	Advanced	Ultra	Classic SCS	Premium SCS	Ultra SCS	New instruments
Instrument registration		•	•	•	•	•	•	•	•	•	Accredited certificate to be ordered with instrument
Gravimetric test before maintenance («as found»)	Min. vol.	5 x				10 x	10 x			10 x	
	Mid. vol.	5 x					10 x <sup>3)</sup>			10 x <sup>3)</sup>	
	Max. vol.	5 x				10 x	10 x			10 x	
Decontamination <sup>1)</sup> , disinfection, disassembling, cleaning			•	•	•	•	•	•	•	•	
Instrument check-up		•	•	•	•	•	•	•	•	•	
X-ring replacement as needed			•	•	•	•	•	•	•	•	
Other faulty parts replacement as needed			•	•	•	•	•	•	•	•	
Function and tightness check		•	•	•	•	•	•	•	•	•	
Gravimetric test after maintenance per ISO 8655	Min. vol.		4 x <sup>2)</sup>	10 x	10 x	10 x	10 x				
	Mid. vol.		-	-	10 x <sup>3)</sup>	-	10 x <sup>3)</sup>				
	Max. vol.		4 x <sup>2)</sup>	10 x	10 x	10 x	10 x				
Gravimetric test after maintenance per ISO 17025	Min. vol.							10 x	10 x	10 x	10 x
	Mid. vol.							-	10 x <sup>3)</sup>	10 x <sup>3)</sup>	10 x <sup>3)</sup>
	Max. vol.							10 x	10 x	10 x	10 x
Final check and visa		•	•	•	•	•	•	•	•	•	•
QC certificate before maintenance («as found»)		•				•	•			• ISO 17025	
QC certificate after calibration («as left»)			•	•	•	•	•				
Accredited certificate per ISO 17025								•	•	•	•

<sup>1)</sup> On request

<sup>2)</sup> Five measurements, multichannel below 50µL

<sup>3)</sup> When applicable

## catalogue number index

Cat. No.	Page	Cat. No.	Page	Cat. No.	Page	Cat. No.	Page	Cat. No.	Page	Cat. No.	Page
0187.003	29	1.525.650	23	164.0502	27	309.0200B	33	320.337B	38	371.1210	28
0187.005	29	1.525.GL32	24	164.0505	27	309.0200R	33	320.337G	38	371.1210UN	28
0187.01	29	1.525.GL38	24	164.0510	27	309.1000AFB	33	320.337M	38	371.1220	28
0187.02	29	1.525.GL40	24	172.0501	27	309.1000B	33	320.337R	38	371.1235	28
0187.05	29	1.825.025	8	172.0502	27	309.1000FR	33	320.337Y	38	371.1250	28
0187.05T	28	1.825.100	8	172.0505	27	309.1000R	33	320.340	13/18/37	371.1420	28
0187.10	29	1.825.700	9	172.0510	27	309.100FS	33	320.411	17	371.1435	28
0187.20	29	1.825.710	9	173.05003	27	312.02	33	320.446	30	371.15150	28
1.170.054	18/28	1.825.711	9	173.05005	27	312.05B	33	320.903.48	6	371.16100	28
1.170.058	18/28	1.825.712	9	173.0501	27	312.05R	33	320.913.48	6	371.1620	28
1.170.205	28	1.825.713	9	173.0502	27	312.10	33	320.BC050	23	371.1620UN	28
1.170.300	28	1.825.714	9	173.0505	27	312.10ER	33	320.BC100	23	371.1625	28
1.170.301	28	1.825.715	9	173.0510	27	313.02.150	35	320.SB050	23	371.1630	28
1.170.305	28	1.825.716	9	173.0520	27	313.02.150C	35	320.SB100	23	371.1810	28
1.170.320	28	1.825.717	9	174.0501	27	313.02.230	35	322.02	35	371.1820	28
1.170.4005	29	1.825.718	9	174.0502	27	313.02.230C	35	322.05	6/35	371.1830	28
1.170.401	29	1.825.719	9	174.0505	27	313.1119.40	13/35	322.10	6/35	371.2030	28
1.170.402	29	1.825.720	9	174.0510	27	314.0100	24	322.400	30/31	371.2030UN	28
1.170.405	29	1.825.721	9	187.591	29	314.0250	24	322.435	30/31	371.2040	28
1.170.410	29	1.825.722	9	187.592	29	314.0250C	24	322.810	13/35	371.2050	28
1.170.420	29	1.825.723	9	187.593	29	314.0500	24	327.0200B	33	376.0925B	28
1.170.705	28	1.831.707	6	187.594	29	314.0500C	24	327.0200R	33	376.0925S	28
1.170.755	28	1.835.631	6/35	187.705	29	314.0500P	24	328.0200B	33	376.1251B	28
1.170.906	28	1.835.633	6/35	187.707	29	314.0500PE	24	328.0200ER	33	376.1251S	28
1.170.912	28	1.861.21T	18	187.710	29	314.1000	24	328.0200R	33	376.16102B	28
1.170.945	28	1.861.631	18	187.905	29	314.1000C	24	329.0200B	33	376.16102S	28
1.170.952	28	1.861.720	18	187.910	29	314.1000PE	24	329.0200R	33	376.30203B	28
1.170.956	28	1.861.925	18	187.933	29	314.2000C	24	330.01	36	376.30203S	28
1.170.962	28	1.861.E32	18	302.0010AFB	32	314.2500	24	330.01L	36	406.002	31
1.187.060	28	155.0301	29	302.0010FR	32	314.2500H	24	330.08.9	36	406.025	31
1.187.150	28	155.0305	29	302.0010GR	32	314.2500PE	24	330.12.9	36	406.010	31
1.187.1C	28	155.0310	29	302.0020B	32	315.0250	24	341.005	16	406.300	31
1.187.250	28	155.03100	29	302.0020ER	33	315.0500	24	341.025	16	411.5000	17
1.187.72003	29	155.0320	29	302.0020R	32	315.1000	24	341.050	16	435.100	31
1.187.72005	29	155.0330	29	307.0200B	33	315.2500	24	341.100	16	446.100E	30
1.187.7201	29	155.0501	29	307.1000B	33	316.010	17	341.200	16	446.100G	30
1.187.7202	29	155.0502	29	307.1000R	33	316.010.9	17	342.005	16	446.100U	30
1.187.7205	29	155.0505	29	308.0020FR	32	316.050	17	342.025	16	501.02025	19
1.187.7210	29	155.0510	29	308.0020FS	32	316.050.9	17	342.050	16	501.021	19
1.187.7220	29	155.05100	29	308.0020GFR	32	316.500	17	342.100	16	501.022	19
1.406.01	31	155.05150	29	308.0100FR	32	316.500.9	17	342.200	16	501.0505	19
1.406.02	31	155.0520	29	308.0100GFR	32	318.1000B	33	370.0840	28	501.051	19
1.411.7	17	155.05200	29	308.0200B	33	318.1000R	33	370.1250	28	501.052	19
1.435.01	30/31	155.05250	29	308.0200GR	33	319.1000B	33	370.22100	28	501.101	19
1.435.02	30/31	155.0530	29	308.0200LFR	33	319.1000R	33	370.22150	28	501.102	19
1.435.03	30/31	155.0550	29	308.0200LFS	33	319.1000ER	33	370.30180	28	501.302	19
1.524	23	162.0501	27	308.0200R	33	320.332	13/37	370.30500	28	511.707	24
1.525.120	23	162.0502	27	308.0300AFB	33	320.332.4	13/37	371.0713	28	511.709	24
1.525.121	23	162.0505	27	308.0300FR	33	320.333	16	371.0810	28	520.002	20
1.525.150	23	163.05003	27	308.0350B	33	320.336B	38	371.0825	28	520.005	20
1.525.151	23	163.05005	27	308.0350ER	33	320.336G	38	371.0830	28	520.010	20
1.525.525	24	163.0501	27	308.0350R	33	320.336O	38	371.0840	28	520.F02	20
1.525.526	24	163.0502	27	309.0010B	32	320.336Q	38	371.1010	28	520.F05	20
1.525.546	23	163.0505	27	309.0010ER	33	320.336R	38	371.1020	28	520.F10	20
1.525.581	23	163.0510	27	309.0010FR	32	320.336W	38	371.1030	28	521.621	24
1.525.625	23	164.0501	27	309.0010R	32	320.336Y	38	371.1040	28	521.622	24

Cat. No.	Page	Cat. No.	Page	Cat. No.	Page	Cat. No.	Page	Cat. No.	Page	Cat. No.	Page
521.623	24	800.08.200	6	815.0300	11	826.0010	8	852.12.100	15	926.0100	6
521.705	24	800.08.350	6	815.0400	11	826.0010Y	8	852.12.200	15	926.0100E	6
521.706	24	800.1000	6	815.0500	11	826.0020	8	855.08.010	12	926.0200	6
525.025	22	800.10000	6	815.0600	11	826.0050	8	855.08.050	12	926.0200E	6
525.025FC	22	800.1000XS	6	815.0700	11	826.0100	8	855.08.200	12	926.1000	6
525.050	22	800.12.010	6	815.0750	11	826.0200	8	855.08.350	12	926.1000E	6
525.050FC	22	800.12.050	6	815.0800	11	826.1000	8	855.12.010	12	936.02	6
525.100	22	800.12.200	6	815.0900	11	826.TWX.E	9	855.12.050	12	936.02E	6
525.100FC	22	800.12.350	6	815.1000	11	826.TWX.G	9	855.12.200	12	936.05	6
525.350	24	800.2000	6	822.0002	14	826.TWX.H	9	855.12.350	12	936.05E	6
525.706	24	800.5000	6	822.0010	14	826.TWX.K	9	865.0050	18	936.10	6
530.025	22	810.1100	13	822.0010Y	14	826.TWX.N	9	865.0200	18	936.10E	6
530.025FC	22	815.0001	11	822.0020	14	826.TWX.Q	9	865.1000	18	956.08.010	6
530.050	22	815.0005	11	822.0100	14	832.02	14	900.901.48A	6	956.08.010E	6
530.050FC	22	815.0010	11	822.0200	14	832.10	14	900.901.48E	6	956.08.050	6
530.100	22	815.0010Y	11	822.1000	14	835.02	10	900.901.48G	6	956.08.050E	6
530.100FC	22	815.0015	11	825.0002	8	835.05	10	900.901.48U	6	956.08.200	6
800.0002	6	815.0020	11	825.0010	8	835.02PP	10	900.916	30	956.08.200E	6
800.0002XS	6	815.0025	11	825.0010Y	8	835.05PP	10	900.920.48	6	956.08.350	6
800.0010	6	815.0030	11	825.0020	8	835.10	10	900.922.48	6	956.08.350E	6
800.0010XS	6	815.0032	11	825.0050	8	835.F02	11	900.946E	30	956.12.010	6
800.0010Y	6	815.0040	11	825.0100	8	835.F02.5	11	900.946G	30	956.12.010E	6
800.0010YXS	6	815.0050	11	825.0200	8	835.F05	11	900.946U	30	956.12.050	6
800.0020	6	815.0060	11	825.1000	8	835.F10	11	926.0002	6	956.12.050E	6
800.0020XS	6	815.0070	11	825.TRIO.C	9	835.TRIO.Y	9	926.0002E	6	956.12.200	6
800.0050	6	815.0075	11	825.TRIO.J	9	841.005	16	926.0010	6	956.12.200E	6
800.0050XS	6	815.0080	11	825.TRIO.M	9	841.025	16	926.0010E	6	956.12.350	6
800.0100	6	815.0090	11	825.TRIO.O	9	841.050	16	926.0010Y	6	956.12.350E	6
800.0100XS	6	815.0100	11	825.TRIO.P	9	841.100	16	926.0010YE	6	GLP + Ø	24
800.0200	6	815.0120	11	825.TRIO.S	9	841.200	16	926.0020	6	GLT + Ø	24
800.0200XS	6	815.0150	11	825.TRIO.T	9	852.08.010	15	926.0020E	6	NSP + Ø	24
800.08.010	6	815.0200	11	825.TRIO.V	9	852.08.100	15	926.0050	6	NST + Ø	24
800.08.050	6	815.0250	11	826.0002	8	852.08.200	15	926.0050E	6		

## Patents and Trade marks

### Socorex® Instruments

Acura® models 810, 815, 825, 826 XS, 835, 835F, 855, 865  
Acura® models 810, 815, 825, 826 XS, 835, 835F, 855, 926 XS, 936, 956  
Acura® models 826XS.0200, 826XS.1000  
Acura® models 926XS.0200, 926XS.1000  
Calibrex™ models 525, 530

### US Patents

7,204,163 B2  
6,833,114 B1  
8,900,526 B2  
Pending

Socorex®

Calibra®

ABF™

Calibrex™

Jet-Pen™

Stepper™

Isba®

Qualitips®

Acurex™

Dosys™

Justip™

Acura®

Socorex Stepper®

bioproof™

Ecostep™

Profiller™

Other brand names contained in this catalogue belong to their respective owners.



**Important information**

Refer to package inserts for safety precautions, operating instructions and warranty terms.

User must pay special attention to possible hand fatigue during serial pipetting and its medical consequences such as repetitive strain injuries (RSI).

Mind risks involved in handling hazardous liquids with respect to personal, third party and environmental protection and safety.

Products and specifications are subject to change without prior notice.



**SOCOREX ISBA SA**  
**Champ-Colomb 7, P.O. Box 378**  
**1024 Ecublens/Lausanne**  
**Switzerland**  
**socorex@socorex.com**  
**www.socorex.com**  
**Tel. +41 (0)21 651 6000**  
**Fax +41 (0)21 651 6001**

**Your local distributor**